

Bowie & Dick Test (Wrapping Edition)



Wrapped in medical crepe paper, Bowie & Dick Test packs allow you to meet the requirements of national and international standards, such as Bowie&Dick test packs, with minimal effort and high quality.

The test must have a barrier system to measure steam penetration.

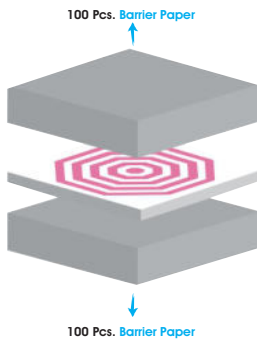
Bowie & Dick Test packs have 3 different barrier system designs created in accordance with different sterilization scenarios.

- * The Bowie & Dick Test Packs tests steam penetration and removal of air from the cabin, as well as detecting air leaks. It is easy to use and cost effective.
- * Water-based and non-toxic chemical indicator is used.
- * Indicator pattern is easy to read and interpret.
- * Designed to give equivalent results to those obtainable by the Bowie & Dick protocol.
- * The backside of the indicator sheet contains fields to be filled out and it can be kept as a permanent record for traceability purposes.
- * Compatible with ISO 11140-4 (Type 2 + 4) (Class 2 + 4).

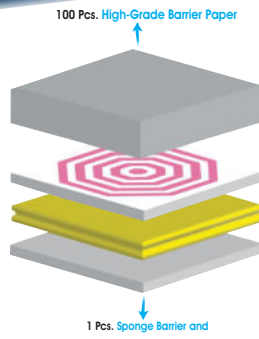
BD-200W



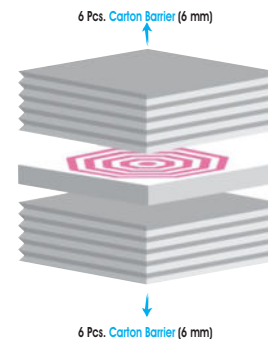
CARD SIZE:
124 X 124 mm



BD-200W



BD-201W



BD-202W

REF NO	DESCRIPTION	PACKAGING
BD-200W	Bowie & Dick Test Wrapping (200 Sheets - Barrier Paper)	100 Pcs. / CARTON
BD-201W	Bowie & Dick Test Wrapping (Sponge Barrier System)	100 Pcs. / CARTON
BD-202W	Bowie & Dick Test Wrapping (Carton Barrier System)	100 Pcs. / CARTON
BD-400W	Bowie & Dick Test Wrapping (400 Sheets - Barrier Paper)	52 Pcs. / CARTON