



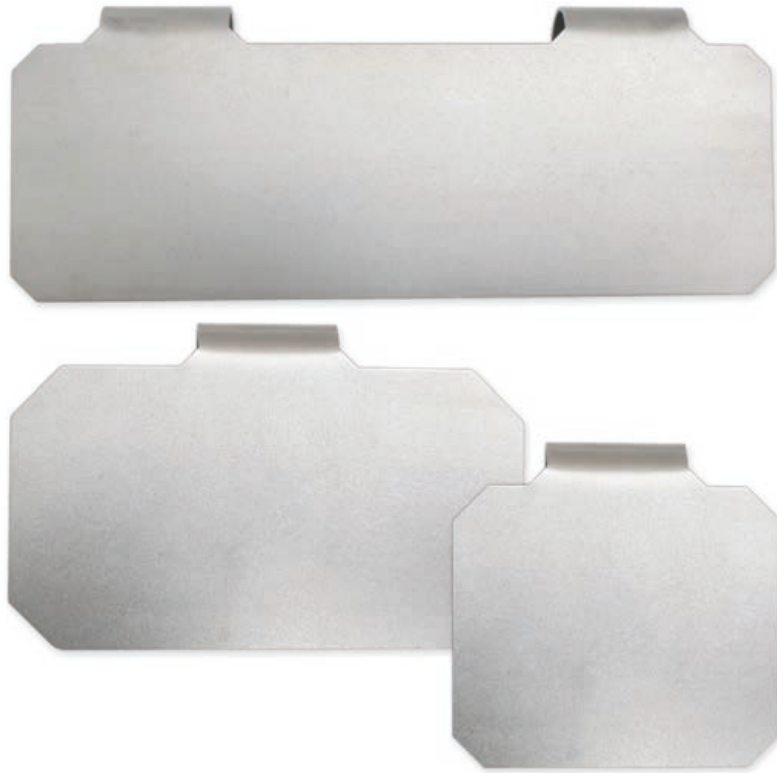
A



B



C



D



E

F



Sieve trays • Sterilisation trays • Accessories – Sieve tray labels

Sieve tray labels are vital since hospitals are constantly in search of ever more sophisticated means of tracking sieve trays. Sieve tray labels are an ideal solution to this problem in terms of both colour-coding and providing information.

- Durable, resilient stainless steel labels
- Plastic labels in a variety of shapes, sizes and materials for simple colour-coding and maximum value for money
- With just a few exceptions they can be labelled using P-Touch, foil labels, laser engraving or etching technology (metal labels only)
- Available as normal versions for attachment with a wide range of aids, e.g., silicone stoppers or cable ties as well as clip labels which are attached directly to the sieve tray
- Hybrid sieve tray labels as the perfect combination of stainless steel label holders and plastic insertion labels

Interlock labels and tags made of stainless steel for sieve tray labelling

For permanent use, heat-resistant

| | REF | Format in mm | Description | SU |
|----------|-------|--------------|---------------------------------------|----------|
| A | 01445 | 90 x 33 | Label | 50 units |
| A | 01444 | 90 x 50 | Label | 50 units |
| A | 01456 | 40 x 20 | Label | 50 units |
| B | 01452 | Ø 25 | Tag with hole (4 x 9 mm) | 50 units |
| B | 01453 | Ø 50 | Tag with hole (4 x 9 mm) | 50 units |
| C | 01588 | 65 x 24 | Tie-on tag with hole (6 x 10 mm) | 5 units |
| D | 01449 | 90 x 30 | Clip label | 25 units |
| D | 01454 | 90 x 50 | Clip label | 25 units |
| D | 01495 | 70 x 30 | Clip label | 25 units |
| D | 01559 | 55 x 30 | Clip label | 25 units |
| D | 01493 | 30 x 30 | Clip label | 25 units |
| E | 01590 | 75 x 35 | Clip label, suitable for double frame | 25 units |
| F | 01520 | 42 x 36 | Clip label | 25 units |





A



B



C



D



E



F



G



H



I



J



K



L



M



N



O



P



Q



R



S



T



U



V

Sieve trays • Sterilisation trays • Accessories – Sieve tray labels

Interlock PP sieve tray labels for colour-coding

- Not P-touch-compatible
- Laser marking not technically feasible
- For permanent use
- Heat-resistant up to 134°C

| | REF | Format in mm | Colour | SU |
|---|-------|-----------------|-------------|-----------|
| A | 01423 | 90 x 33 | Red | 100 units |
| B | 01424 | 90 x 33 | Dark green | 100 units |
| C | 01996 | 90 x 33 | Light green | 100 units |
| D | 01425 | 90 x 33 | Dark-blue | 100 units |
| E | 01997 | 90 x 33 | Light-blue | 100 units |
| F | 01426 | 90 x 33 | Yellow | 100 units |
| G | 01427 | 90 x 33 | Black | 100 units |
| H | 01428 | 90 x 33 | White | 100 units |
|  | 01429 | 90 x 33 | Brown | 100 units |
| J | 01430 | 90 x 33 | Orange | 100 units |
| K | 01431 | 90 x 33 | Uncoloured | 100 units |
| L | 01432 | 90 x 50 | Red | 100 units |
| M | 01433 | 90 x 50 | Dark green | 100 units |
| N | 01998 | 90 x 50 | Light green | 100 units |
| O | 01434 | 90 x 50 | Dark-blue | 100 units |
| P | 01999 | 90 x 50 | Light-blue | 100 units |
| Q | 01435 | 90 x 50 | Yellow | 100 units |
| R | 01436 | 90 x 50 | Black | 100 units |
| S | 01437 | 90 x 50 | White | 100 units |
| T | 01438 | 90 x 50 | Brown | 100 units |
| U | 01439 | 90 x 50 | Orange | 100 units |
| V | 01440 | 90 x 50 | Uncoloured | 100 units |





A



B



C



D



E



F



G



H



I



J



K



L



M



N



O



P



Q



R



S



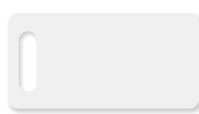
T



U



V



W



X



Y



Z



AA



BB



CC




DD

Sieve trays • Sterilisation trays • Accessories – Sieve tray labels

Interlock PTL sieve tray labels for colour-coding

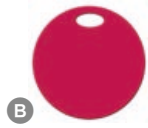
- P-touch-compatible
- Laser marking (text and bar code) possible (green labels can only be lasered with text)
- Can be reused
- Heat-resistant up to 134°C

| | REF | Format in mm | Colour | SU |
|---|-------|-----------------|------------|-----------|
| A | 01900 | 90 x 33 | Red | 100 units |
| B | 01901 | 90 x 33 | Green | 100 units |
| C | 01962 | 90 x 33 | Dark-blue | 100 units |
| D | 01902 | 90 x 33 | Light-blue | 100 units |
| E | 01903 | 90 x 33 | Yellow | 100 units |
| F | 01912 | 90 x 33 | Black | 100 units |
| G | 01904 | 90 x 33 | White | 100 units |
| H | 01905 | 90 x 33 | Orange | 100 units |
|  | 01956 | 90 x 33 | Brown | 100 units |
| J | 01976 | 90 x 33 | Pink | 100 units |
| K | 01977 | 90 x 33 | Lilac | 100 units |
| L | 01906 | 90 x 50 | Red | 100 units |
| M | 01907 | 90 x 50 | Green | 100 units |
| N | 01963 | 90 x 50 | Dark-blue | 100 units |
| O | 01908 | 90 x 50 | Light-blue | 100 units |
| P | 01909 | 90 x 50 | Yellow | 100 units |
| Q | 01994 | 90 x 50 | Black | 100 units |
| R | 01910 | 90 x 50 | White | 100 units |
| S | 01911 | 90 x 50 | Orange | 100 units |
| T | 01957 | 90 x 50 | Brown | 100 units |
| U | 01978 | 90 x 50 | Pink | 100 units |
| V | 01979 | 90 x 50 | Lilac | 100 units |
| W | 02227 | 40 x 20 | White | 100 units |
| X | 02228 | 40 x 20 | Red | 100 units |
| Y | 02229 | 40 x 20 | Green | 100 units |
| Z | 02230 | 40 x 20 | Light-blue | 100 units |
| AA | 02231 | 40 x 20 | Dark-blue | 100 units |
| BB | 02232 | 40 x 20 | Yellow | 100 units |
| CC | 02280 | 40 x 20 | Black | 100 units |
| DD | 02281 | 40 x 20 | Lilac | 100 units |

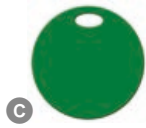




A



B



C



D



E



F



G



H



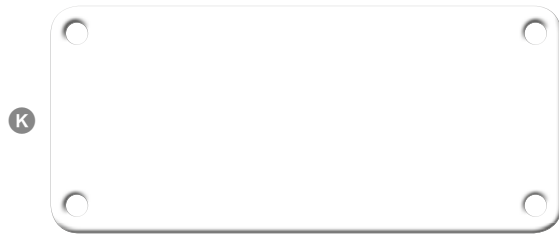
I



J



L



K



M



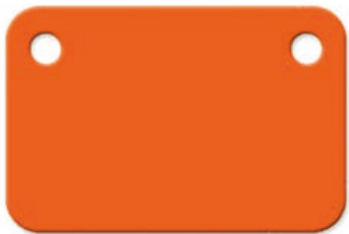
N



O



P



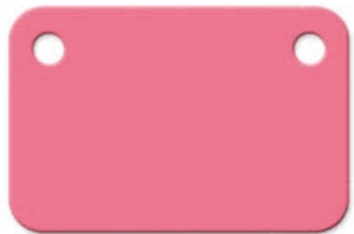
Q



R



S



T



U



V



W



X

Sieve trays • Sterilisation trays • Accessories – Sieve tray labels


Interlock PTL tags

- P-touch-compatible
- Laser marking (text)
- Can be reused
- Heat-resistant up to 134°C

| | REF | Tag Ø in mm | Colour | SU |
|----------|-------|----------------|------------|-----------|
| A | 01591 | 25 | White | 100 units |
| B | 01592 | 25 | Red | 100 units |
| C | 01593 | 25 | Green | 100 units |
| D | 01594 | 25 | Light-blue | 100 units |
| E | 01595 | 25 | Dark-blue | 100 units |
| F | 01596 | 25 | Yellow | 100 units |
| G | 02282 | 25 | Black | 100 units |
| H | 02283 | 25 | Lilac | 100 units |

Interlock PTL tie-on tags with 4 holes

- P-touch-compatible
- Laser marking (text and bar code) possible
- Can be reused
- Heat-resistant up to 134°C
- Can be attached using the clipper REF 01589

| | REF | Format in mm | Colour | SU |
|---|-------|-----------------|------------|-----------|
|  | 02255 | 90 x 40 | Light-red | 100 units |
| J | 02253 | 90 x 40 | Light-blue | 100 units |
| K | 02254 | 90 x 40 | White | 100 units |

Interlock PTL sieve tray labels for sieve tray labelling with 2 holes

- P-touch-compatible
- Laser marking (text and bar code) possible (green labels can only be lasered with text)
- Can be reused
- Heat-resistant up to 134°C
- Compatible with label holders REF 01498, 01548 and Wagner containers

| | REF | Format in mm | Colour | SU |
|----------|-------|-----------------|--------------|-----------|
| L | 01948 | 60 x 40 | White | 100 units |
| M | 01949 | 60 x 40 | Red | 100 units |
| N | 01950 | 60 x 40 | Green | 100 units |
| O | 01969 | 60 x 40 | Dark-blue | 100 units |
| P | 01951 | 60 x 40 | Light-blue | 100 units |
| Q | 01952 | 60 x 40 | Orange | 100 units |
| R | 01953 | 60 x 40 | Black | 100 units |
| S | 01954 | 60 x 40 | Yellow | 100 units |
| T | 01990 | 60 x 40 | Pink | 100 units |
| U | 01991 | 60 x 40 | Lilac | 100 units |
| V | 02278 | 60 x 40 | Brown | 100 units |
| W | 02279 | 60 x 40 | Ochre yellow | 100 units |
| X | 02284 | 60 x 40 | Grey | 100 units |

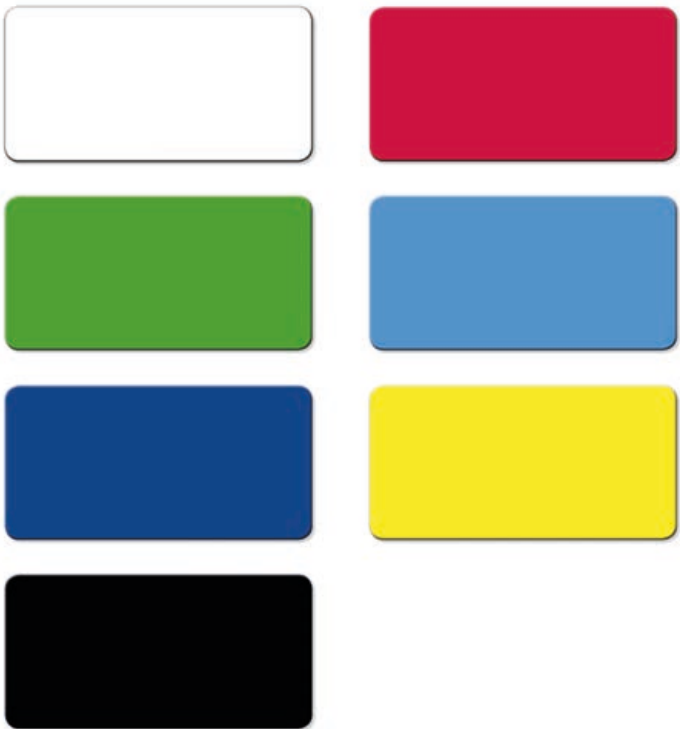




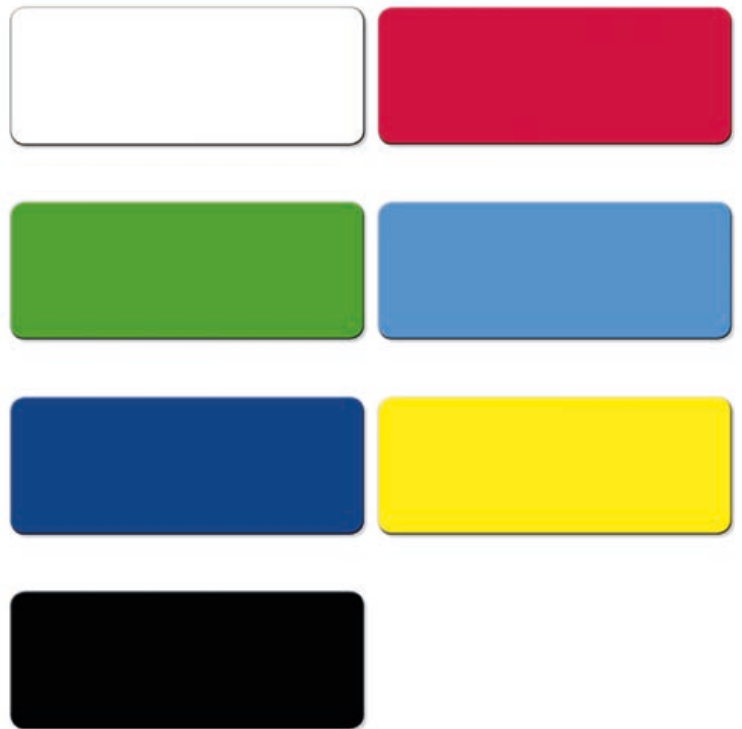
A



B



C



D

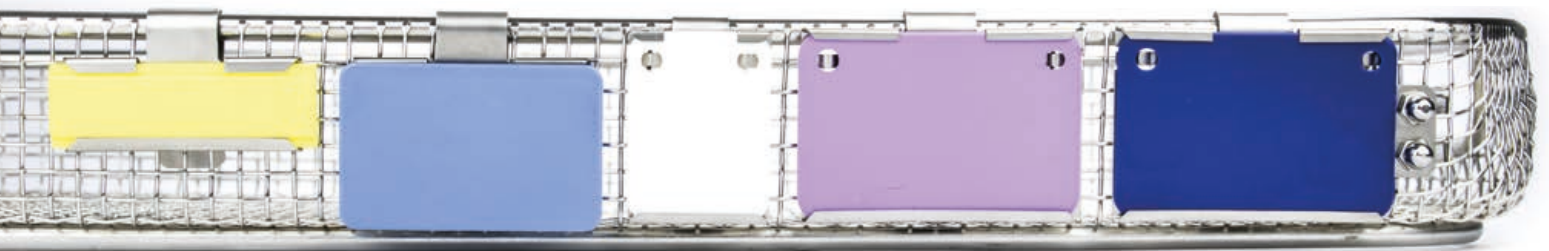
Sieve trays • Sterilisation trays • Accessories – Sieve tray labels

Interlock insertion labels

- P-touch-compatible
- Laser marking (text and bar code) possible (green labels can only be lasered with text)
- For permanent use
- Heat-resistant up to 134°C
- Compatible with clip label holder REF 01497 and suitable label holders on containers

| | REF | Format in mm | Colour | SU |
|---|-------|--------------|--------------|----------|
| Ⓐ | 01550 | 56 x 18 | White | 10 units |
| Ⓐ | 01551 | 56 x 18 | Red | 10 units |
| Ⓐ | 01552 | 56 x 18 | Green | 10 units |
| Ⓐ | 01553 | 56 x 18 | Light-blue | 10 units |
| Ⓐ | 01554 | 56 x 18 | Yellow | 10 units |
| Ⓐ | 01555 | 56 x 18 | Orange | 10 units |
| Ⓐ | 01556 | 56 x 18 | Black | 10 units |
| Ⓐ | 01557 | 56 x 18 | Ochre yellow | 10 units |
| Ⓐ | 01970 | 56 x 18 | Dark-blue | 10 units |
| Ⓐ | 01992 | 56 x 18 | Pink | 10 units |
| Ⓐ | 01993 | 56 x 18 | Lilac | 10 units |
| Ⓐ | 01558 | 56 x 18 | Brown | 10 units |
| Ⓑ | 01566 | 55 x 35 | White | 25 units |
| Ⓑ | 01567 | 55 x 35 | Red | 25 units |
| Ⓑ | 01568 | 55 x 35 | Green | 25 units |
| Ⓑ | 01569 | 55 x 35 | Light-blue | 25 units |
| Ⓑ | 01570 | 55 x 35 | Yellow | 25 units |
| Ⓑ | 01571 | 55 x 35 | Orange | 25 units |
| Ⓑ | 01573 | 55 x 35 | Dark-blue | 25 units |
| Ⓑ | 01575 | 55 x 35 | Pink | 25 units |
| Ⓑ | 01576 | 55 x 35 | Lilac | 25 units |
| Ⓑ | 01597 | 55 x 35 | Black | 25 units |
| Ⓒ | 02215 | 70 x 35 | White | 25 units |
| Ⓒ | 02216 | 70 x 35 | Red | 25 units |
| Ⓒ | 02217 | 70 x 35 | Green | 25 units |
| Ⓒ | 02218 | 70 x 35 | Light-blue | 25 units |
| Ⓒ | 02219 | 70 x 35 | Dark-blue | 25 units |
| Ⓒ | 02220 | 70 x 35 | Yellow | 25 units |
| Ⓒ | 01598 | 70 x 35 | Black | 25 units |
| Ⓓ | 02221 | 90 x 35 | White | 25 units |
| Ⓓ | 02222 | 90 x 35 | Red | 25 units |
| Ⓓ | 02223 | 90 x 35 | Green | 25 units |
| Ⓓ | 02224 | 90 x 35 | Light-blue | 25 units |
| Ⓓ | 02225 | 90 x 35 | Dark-blue | 25 units |
| Ⓓ | 02226 | 90 x 35 | Yellow | 25 units |
| Ⓓ | 01599 | 90 x 35 | Black | 25 units |





Sieve trays • Sterilisation trays • Accessories – Sieve tray labels

The robust, high-quality stainless steel label holders in combination with various PTL insertion labels are durable and have a variety of colour coding options.

- The materials and design of the label holders are intended for thousands of sterilisation cycles
- PTL labels offer flexible labelling by laser marking, P-touch or markers
- Many different colours and sizes are available, making it easy to assign departments or priorities

Interlock clip label holder made of stainless steel

- For permanent use
- Heat resistant

| | REF | Format in mm | Description | SU |
|---|-------|--------------|--|----------|
| A | 01491 | 30 x 40 | Label holder, compatible with REF 02256 | 25 units |
| B | 01548 | 60 x 40 | Label holder with side flap, compatible with REF 01948 - REF 01991 | 25 units |
| C | 01497 | 50 x 20 | Label holder, compatible with REF 01550 etc. | 25 units |
| D | 01498 | 60 x 40 | Label holder compatible with REF 01948 - REF 01991 | 25 units |
| E | 01995 | 80 x 30 | Mesh basket label holder | 25 units |

Aluminium labels

- Suitable for slim label slots on containers and in REF 01497
- Suitable for laser marking

| | REF | Format in mm | Colour | SU |
|---|-------|--------------|--------|----------|
| F | 28500 | 18 x 50 | Silver | 25 units |
| G | 28501 | 18 x 50 | Blue | 25 units |
| H | 28502 | 18 x 50 | Red | 25 units |
| I | 28503 | 18 x 50 | Yellow | 25 units |
| J | 28504 | 18 x 50 | Green | 25 units |
| K | 28505 | 18 x 50 | Black | 25 units |





Sieve trays • Sterilisation trays • Accessories – Sieve tray labels

Interlock stoppers

For attaching sieve tray labels, silicone corners etc.

| | REF | Colour | Description | Material | SU |
|----------|-------|-------------|--|----------|-----------|
| A | 09097 | Uncoloured | - | Silicone | 100 units |
| A | 09225 | Blue | - | Silicone | 100 units |
| A | 09226 | Red | - | Silicone | 100 units |
| A | 09227 | Yellow | - | Silicone | 100 units |
| A | 09228 | Green | - | Silicone | 100 units |
| A | 09493 | Pink | - | Silicone | 100 units |
| B | 09465 | Pink | Model 2013 | Silicone | 100 units |
| B | 09466 | Transparent | Model 2013 | Silicone | 100 units |
| B | 09468 | Red | Model 2013 | Silicone | 100 units |
| B | 09469 | Yellow | Model 2013 | Silicone | 100 units |
| B | 09470 | Green | Model 2013 | Silicone | 100 units |
| C | 09487 | Transparent | Mini, for attaching sieve tray labels to perforated plate mesh trays | Silicone | 100 units |
| D | 09230 | white | - | Plastic | 100 units |

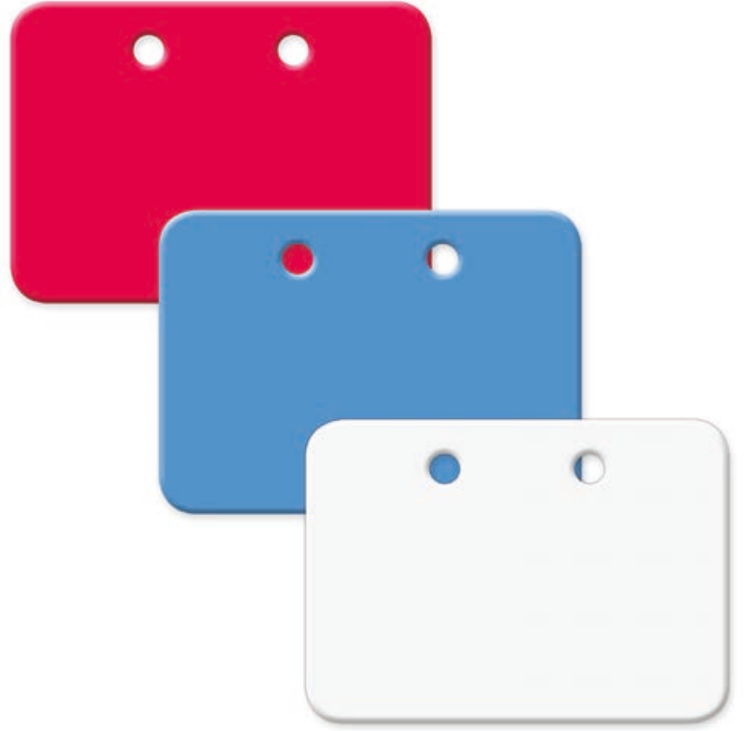
Interlock accessories for affixing sieve tray labels

| | REF | Format in mm | Description | Material | SU |
|-----------|-------|--------------|--|-----------------------|-----------|
| E | 01458 | Ø 20 | Keyring for affixing sieve tray labels | Stainless steel | 100 units |
| E | 01490 | Ø 10 | Keyring for affixing sieve tray labels | Stainless steel | 100 units |
| F | 08443 | M4 x 8 | Bolts with raised head | Stainless steel (V2A) | 50 units |
| G | 08444 | M4 x 8 | Cap nuts for bolts (REF 08443) | Stainless steel (V2A) | 50 units |
| H | 08477 | M4 | Clamping fixture set comprising: - 1 x cap nut - 1 x flat washer - 1 x fixing plate | Stainless steel | 100 units |
| IL | 08952 | M 1.6 x 6 | Bolts | Stainless steel (V4A) | 100 units |
| J | 08953 | M 1.6 x 4 | Flat washers | Stainless steel (V4A) | 100 units |
| K | 08954 | M 2 x 7 | Flat washers | Stainless steel (V4A) | 100 units |
| L | 08955 | M 1.6 | Nuts | Stainless steel (V4A) | 100 units |
| M | 01589 | 40 | Clipper for tie-on label; compatible with tie-on label REF 01588 and in particular REF 02253 - 02255 | Stainless steel | 5 units |

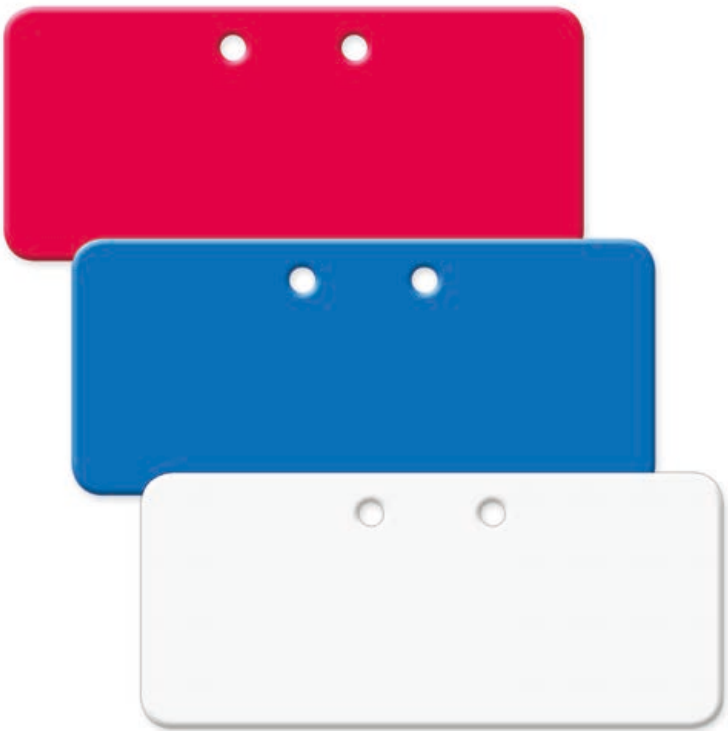




A



B



C



D

Sieve trays • Sterilisation trays • Accessories – Sieve tray labels

Interlock PTL mesh tray label

- P-touch-compatible
- Laser marking (text and bar code) possible
- Can be reused
- Heat-resistant up to 134°C
- Compatible with clamp label holder REF 01491

| | REF | Format in mm | Colour | SU |
|----------|-------|--------------|------------|-----------|
| A | 02256 | 30 x 40 | Light-red | 100 units |
| A | 02257 | 30 x 40 | Light-blue | 100 units |
| A | 02260 | 30 x 40 | White | 100 units |
| B | 02262 | 55 x 40 | Light-red | 100 units |
| B | 02263 | 55 x 40 | Light-blue | 100 units |
| B | 02266 | 55 x 40 | White | 100 units |
| C | 02268 | 90 x 40 | Light-red | 100 units |
| C | 02269 | 90 x 40 | Light-blue | 100 units |
| C | 02272 | 90 x 40 | White | 100 units |

Interlock sieve tray labels

- No laser marking possible
- Not P-touch-compatible
- Can be reused
- Heat-resistant up to 134°C

| | REF | Format in mm | Description | SU |
|----------|-------|--------------|---|------------|
| D | 01421 | 90 x 50 | With attachment holes | 150 units |
| D | 01422 | 90 x 33 | With attachment holes | 200 units |
| D | 04122 | 60 x 40 | Without attachment holes, can be used with Wagner and Nopa containers | 1000 units |

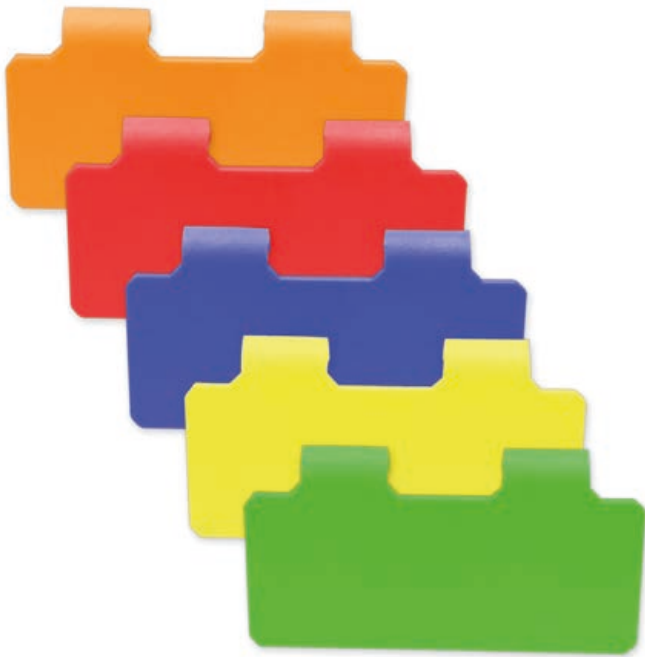




A



B



C



D

E



Sieve trays • Sterilisation trays • Accessories – Sieve tray labels

Interlock PP clips labels for colour-coding

- No laser marking possible
- Not P-touch-compatible
- For permanent use
- Heat-resistant up to 134°C

| | REF | Format in mm | Colour | SU |
|---|-------|--------------|------------|----------|
| A | 01583 | 30 x 30 | Orange | 25 units |
| A | 01584 | 30 x 30 | Red | 25 units |
| A | 02234 | 30 x 30 | Dark-blue | 25 units |
| A | 01585 | 30 x 30 | Light-blue | 25 units |
| A | 01586 | 30 x 30 | Yellow | 25 units |
| A | 01587 | 30 x 30 | Green | 25 units |
| A | 02236 | 30 x 30 | White | 25 units |
| A | 02237 | 30 x 30 | Black | 25 units |
| A | 02239 | 30 x 30 | Pink | 25 units |
| A | 02240 | 30 x 30 | Lilac | 25 units |
| A | 02241 | 30 x 30 | Brown | 25 units |
| B | 01578 | 55 x 30 | Orange | 25 units |
| B | 01579 | 55 x 30 | Red | 25 units |
| B | 02235 | 55 x 30 | Dark-blue | 25 units |
| B | 01580 | 55 x 30 | Light-blue | 25 units |
| B | 01581 | 55 x 30 | Yellow | 25 units |
| B | 01582 | 55 x 30 | Green | 25 units |
| B | 02242 | 55 x 30 | Black | 25 units |
| B | 02243 | 55 x 30 | White | 25 units |
| B | 02244 | 55 x 30 | Pink | 25 units |
| B | 02245 | 55 x 30 | Lilac | 25 units |
| B | 02246 | 55 x 30 | Brown | 25 units |
| C | 02200 | 70 x 30 | Orange | 25 units |
| C | 02201 | 70 x 30 | Red | 25 units |
| C | 02202 | 70 x 30 | Blue | 25 units |
| C | 02203 | 70 x 30 | Yellow | 25 units |
| C | 02204 | 70 x 30 | Green | 25 units |
| D | 02205 | 90 x 30 | Orange | 25 units |
| D | 02206 | 90 x 30 | Red | 25 units |
| D | 02233 | 90 x 30 | Dark-blue | 25 units |
| D | 02207 | 90 x 30 | Light-blue | 25 units |
| D | 02208 | 90 x 30 | Yellow | 25 units |
| D | 02209 | 90 x 30 | Green | 25 units |
| D | 02251 | 90 x 30 | White | 25 units |
| D | 02252 | 90 x 30 | Black | 25 units |
| E | 02210 | 90 x 50 | Orange | 25 units |
| E | 02211 | 90 x 50 | Red | 25 units |
| E | 02212 | 90 x 50 | Blue | 25 units |
| E | 02213 | 90 x 50 | Yellow | 25 units |
| E | 02214 | 90 x 50 | Green | 25 units |
| E | 02247 | 90 x 50 | Black | 25 units |
| E | 02249 | 90 x 50 | Pink | 25 units |
| E | 02250 | 90 x 50 | Lilac | 25 units |





A



B



C

Sieve trays • Sterilisation trays • Accessories – Sieve tray labels

Interlock PTL clips labels for colour-coding

- P-touch-compatible
- Laser marking (text and bar code) possible (green labels can only be lasered with text)
- Can be reused
- Heat-resistant up to 134°C

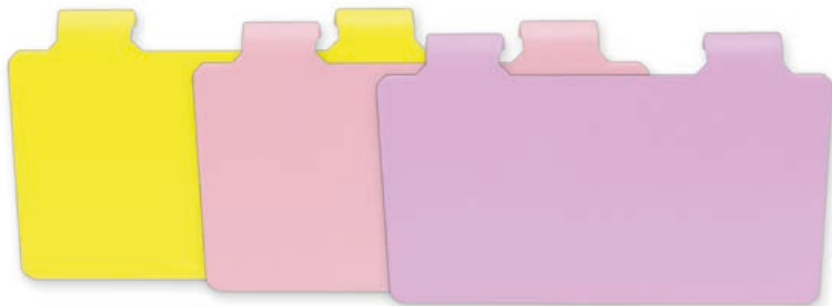
| | REF | Format in mm | Colour | SU |
|---|-------|--------------|--------------|----------|
| Ⓐ | 01913 | 30 x 30 | White | 25 units |
| Ⓐ | 01914 | 30 x 30 | Red | 25 units |
| Ⓐ | 01915 | 30 x 30 | Green | 25 units |
| Ⓐ | 01964 | 30 x 30 | Dark-blue | 25 units |
| Ⓐ | 01916 | 30 x 30 | Light-blue | 25 units |
| Ⓐ | 01917 | 30 x 30 | Orange | 25 units |
| Ⓐ | 01918 | 30 x 30 | Black | 25 units |
| Ⓐ | 01919 | 30 x 30 | Ochre yellow | 25 units |
| Ⓐ | 01563 | 30 x 30 | Yellow | 25 units |
| Ⓐ | 01980 | 30 x 30 | Pink | 25 units |
| Ⓐ | 01981 | 30 x 30 | Lilac | 25 units |
| Ⓐ | 01961 | 30 x 30 | Brown | 25 units |
| Ⓑ | 01920 | 55 x 30 | White | 25 units |
| Ⓑ | 01921 | 55 x 30 | Red | 25 units |
| Ⓑ | 01922 | 55 x 30 | Green | 25 units |
| Ⓑ | 01965 | 55 x 30 | Dark-blue | 25 units |
| Ⓑ | 01923 | 55 x 30 | Light-blue | 25 units |
| Ⓑ | 01924 | 55 x 30 | Orange | 25 units |
| Ⓑ | 01925 | 55 x 30 | Black | 25 units |
| Ⓑ | 01926 | 55 x 30 | Ochre yellow | 25 units |
| Ⓑ | 01561 | 55 x 30 | Yellow | 25 units |
| Ⓑ | 01982 | 55 x 30 | Pink | 25 units |
| Ⓑ | 01983 | 55 x 30 | Lilac | 25 units |
| Ⓑ | 01960 | 55 x 30 | Brown | 25 units |
| Ⓒ | 01927 | 70 x 30 | White | 25 units |
| Ⓒ | 01928 | 70 x 30 | Red | 25 units |
| Ⓒ | 01929 | 70 x 30 | Green | 25 units |
| Ⓒ | 01966 | 70 x 30 | Dark-blue | 25 units |
| Ⓒ | 01930 | 70 x 30 | Light-blue | 25 units |
| Ⓒ | 01931 | 70 x 30 | Orange | 25 units |
| Ⓒ | 01932 | 70 x 30 | Black | 25 units |
| Ⓒ | 01933 | 70 x 30 | Ochre yellow | 25 units |
| Ⓒ | 01562 | 70 x 30 | Yellow | 25 units |
| Ⓒ | 01984 | 70 x 30 | Pink | 25 units |
| Ⓒ | 01985 | 70 x 30 | Lilac | 25 units |
| Ⓒ | 01959 | 70 x 30 | Brown | 25 units |





A

B



Sieve trays • Sterilisation trays • Accessories – Sieve tray labels

Interlock PTL clips labels for colour-coding

- P-touch-compatible
- Laser marking (text and bar code) possible (green labels can only be lasered with text)
- Can be reused
- Heat-resistant up to 134°C

| | REF | Format in mm | Colour | SU |
|---|-------|--------------|--------------|----------|
| Ⓐ | 01934 | 90 x 30 | White | 25 units |
| Ⓐ | 01935 | 90 x 30 | Red | 25 units |
| Ⓐ | 01936 | 90 x 30 | Green | 25 units |
| Ⓐ | 01967 | 90 x 30 | Dark-blue | 25 units |
| Ⓐ | 01937 | 90 x 30 | Light-blue | 25 units |
| Ⓐ | 01938 | 90 x 30 | Orange | 25 units |
| Ⓐ | 01939 | 90 x 30 | Black | 25 units |
| Ⓐ | 01940 | 90 x 30 | Ochre yellow | 25 units |
| Ⓐ | 01564 | 90 x 30 | Yellow | 25 units |
| Ⓐ | 01986 | 90 x 30 | Pink | 25 units |
| Ⓐ | 01987 | 90 x 30 | Lilac | 25 units |
| Ⓐ | 01958 | 90 x 30 | Brown | 25 units |
| Ⓑ | 01941 | 90 x 50 | White | 25 units |
| Ⓑ | 01942 | 90 x 50 | Red | 25 units |
| Ⓑ | 01943 | 90 x 50 | Green | 25 units |
| Ⓑ | 01968 | 90 x 50 | Dark-blue | 25 units |
| Ⓑ | 01944 | 90 x 50 | Light-blue | 25 units |
| Ⓑ | 01945 | 90 x 50 | Orange | 25 units |
| Ⓑ | 01946 | 90 x 50 | Black | 25 units |
| Ⓑ | 01947 | 90 x 50 | Ochre yellow | 25 units |
| Ⓑ | 01565 | 90 x 50 | Yellow | 25 units |
| Ⓑ | 01988 | 90 x 50 | Pink | 25 units |
| Ⓑ | 01989 | 90 x 50 | Lilac | 25 units |





interlock

HK/IEPU

Auftragsbelegung

- 1. Schritt
- 2. Schritt
- 3. Schritt
- 4. Schritt
- 5. Schritt
- 6. Schritt
- 7. Schritt
- 8. Schritt
- 9. Schritt
- 10. Schritt

LSB

Sieve trays • Sterilisation trays • Accessories – Laser marking

Whether container or sieve tray label, wire containers or instruments – Interlock enables you to permanently label materials such as plastic, silicone (with limitations) and stainless steel with bar codes, text and number formats using laser marking. Please consult us about your specific labelling requirements.

- Cost-effective permanent labelling of instruments, sieve trays, containers & co.
- Good and permanent legibility after multiple reprocessing
- Hygienic alternative to adhesive markings

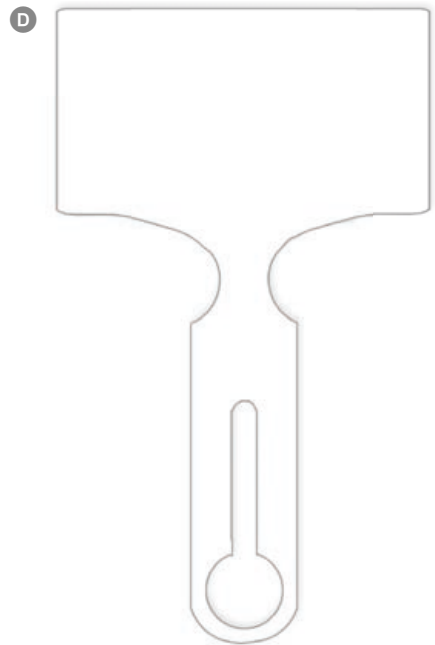
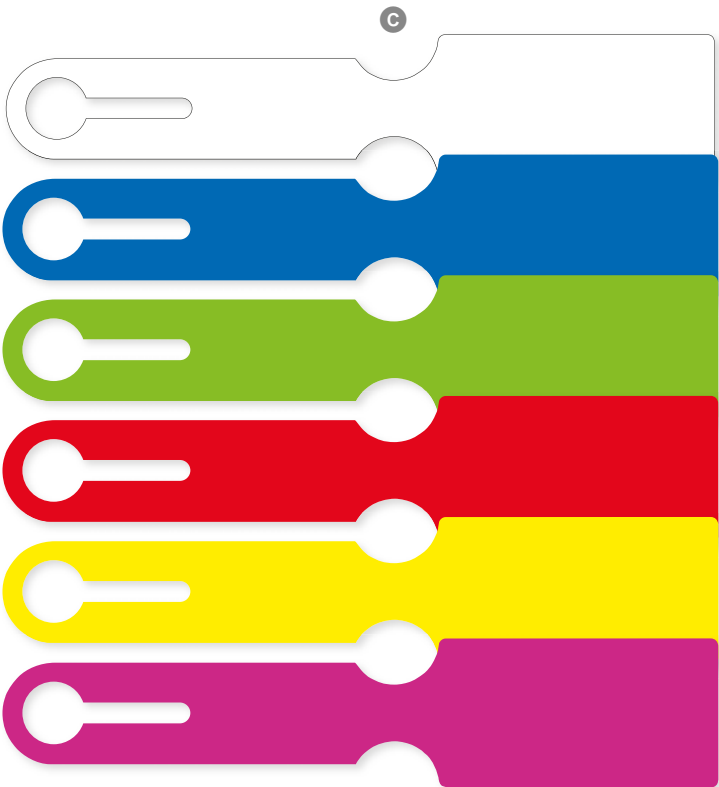
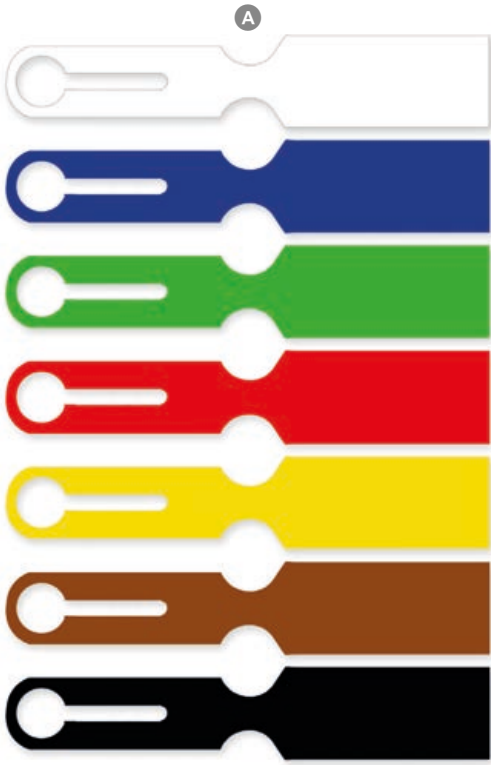
Laser marking for labels

| REF | Description | SU |
|-------|-----------------------------|--------|
| 01451 | Laser marking – single line | 1 unit |
| 01549 | Laser marking – barcode | 1 unit |

Laser marking for displays

| REF | Description | SU |
|-------|-------------------------|--------|
| 00093 | Laser marking – 1-sided | 1 unit |
| 00094 | Laser marking – 2-sided | 1 unit |





Sieve trays • Sterilisation trays • Accessories – Sieve tray tags

Sieve tray tags are used to colour-code sieve trays and containers and to communicate simple information between departments. Interlock is the largest supplier of customised sieve tray tags in the world:

- Customised imprints and colours (e.g., sieve on loan, non-sterile, cleaned + disinfected, etc.) can be produced quickly and even in small quantities
- Heat- and disinfectant-proof material for use during the entire reprocessing cycle
- Stainless steel racks for sieve tray tags help to keep the workplace well organised

Interlock sieve tray tags made of plastic - Blank

For single use, heat-resistant up to 134°C, suitable for washer-disinfectors

| | REF | Format in mm | Colour | SU |
|------------|------------------|--------------|--------------------|-----------|
| | A 09634 | 160 x 35 | White | 250 units |
| | A 09635 | 160 x 35 | Blue | 250 units |
| | A 09636 | 160 x 35 | Green | 250 units |
| | A 09637 | 160 x 35 | Red | 250 units |
| | A 09638 | 160 x 35 | Yellow | 250 units |
| | A 09676 | 160 x 35 | Brown | 250 units |
| | A 09677 | 160 x 35 | Black | 250 units |
| | B 09244 | 236 x 50 | White | 250 units |
| | B 09264 | 236 x 50 | Blue | 250 units |
| | B 09265 | 236 x 50 | Green | 250 units |
| | B 09266 | 236 x 50 | Red | 250 units |
| | B 09267 | 236 x 50 | Yellow | 250 units |
| | B 09269 | 236 x 50 | Orange | 250 units |
| NEW | C 09244SP | 240 x 50 | White | 200 units |
| | C 09566 | 240 x 50 | Blue (one-sided) | 250 units |
| | C 09567 | 240 x 50 | Green (one-sided) | 250 units |
| | C 09568 | 240 x 50 | Red (one-sided) | 250 units |
| | C 09569 | 240 x 50 | Yellow (one-sided) | 250 units |
| | C 08338 | 240 x 50 | Pink (one-sided) | 250 units |
| | D 09268 | 206 x 110 | White | 250 units |

Interlock sieve tray tags made of special paper - Blank

For single use, heat-resistant up to 134°C, not suitable for washer-disinfectors

| | REF | Format in mm | Colour | SU |
|--|----------------|--------------|--------|-----------|
| | D 09599 | 206 x 110 | White | 250 units |
| | E 09751 | 240 x 50 | White | 250 units |






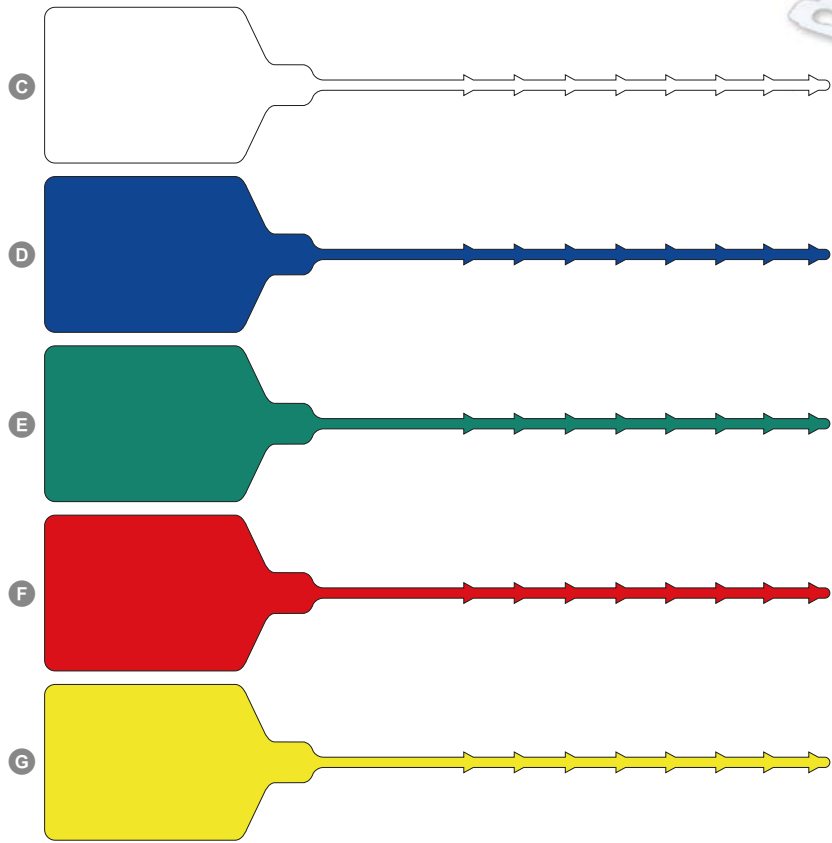
Sieve trays • Sterilisation trays • Accessories – Sieve tray tags

Interlock sieve tray tags made of plastic with imprint

For single use, heat-resistant up to 134°C, suitable for washer-disinfectors

| | REF | Format in mm | Colour | Description | SU | |
|------------|---|-----------------|----------|-------------|---------------------|-----------|
| | A | 09563 | 240 x 50 | Green | “Service” | 250 units |
| | B | 09570 | 240 x 50 | Green | “URGENT” | 250 units |
| NEW | C | 08378 | 240 x 50 | Red | „URGENT“ | 250 units |
| | D | 08309 | 240 x 50 | Red | “MRSA” | 250 units |
| | E | 08320 | 240 x 50 | Red | “à réparer” | 250 units |
| | F | 09564 | 240 x 50 | Red | “Defective Product” | 250 units |
| | G | 09755 | 240 x 50 | Red | “Team-Time-out” | 250 units |
| NEW | H | 09790 | 240 x 50 | Red | „Endovesical“ | 250 units |
| NEW |  | 18037 | 240 x 50 | Red | „QUARANTAINE“ | 250 units |
| | J | 09752 | 150 x 35 | Red | “Sharpen” | 250 units |
| | K | 09584 | 240 x 50 | Yellow | “Urgent” | 250 units |
| | L | 08328 | 240 x 50 | Yellow | “incomplet” | 250 units |
| | M | 08327 | 240 x 50 | Orange | “En dépôt” | 250 units |
| | N | 09753 | 150 x 35 | Orange | “Repair” | 250 units |
| NEW | O | 09789 | 240 x 50 | Blue | „Station“ | 250 units |
| | P | 08325 | 240 x 50 | Light blue | “Urgent” | 250 units |
| | Q | 08319 | 240 x 50 | Violet | “En prêt” | 250 units |
| NEW | R | 18038 | 150 x 35 | Violet | “En prêt” | 250 units |
| NEW | S | 09565 | 240 x 50 | White | “ORSOS” | 250 units |
| | T | 09762 | 240 x 50 | White | „Calendar“ | 250 units |
| | U | 08326 | 240 x 50 | Black | “Réservé” | 250 units |





Sieve trays • Sterilisation trays • Accessories – Sieve tray tags

Interlock sieve tray tags made of plastic - on reel

For single use, white, core diameter: 76 mm, with tear-off perforation, heat-resistant up to 134°C, suitable for washer-disinfectors

Customised imprint possible as of 100 units

| | REF | Format in mm | Description | SU |
|----------|-------|--------------|--------------------|--------|
| A | 09691 | 160 x 19 | 5000 pcs. per reel | 1 reel |
| B | 09399 | 254 x 42 | 600 pcs. per reel | 1 reel |

Interlock PP sieve tray tags

Heat-resistant up to 134°C, suitable for washer-disinfectors

| | REF | Length in mm | Text field size in mm | Colour | SU |
|----------|-------|--------------|-----------------------|--------|-----------|
| C | 09679 | 200 | 50 x 30 | White | 100 units |
| D | 09680 | 200 | 50 x 30 | Blue | 100 units |
| E | 09681 | 200 | 50 x 30 | Green | 100 units |
| F | 09682 | 200 | 50 x 30 | Red | 100 units |
| G | 09683 | 200 | 50 x 30 | Yellow | 100 units |

RFID sieve tray tags made of silicone

Heat-resistant up to 134°C, integrated RFID chip (ISO-15693)

| | REF | Colour | SU |
|----------|-------|--------|--------|
| H | 08965 | Yellow | 1 unit |
| H | 08966 | Green | 1 unit |
| H | 08967 | Black | 1 unit |
| H | 08968 | Blue | 1 unit |
| H | 08969 | White | 1 unit |

Stainless steel rack for sieve tray tags

| | REF | Format in mm | Description | SU |
|----------|-------|-----------------|---|--------|
| I | 20441 | 188 x 100 x 255 | 3 hooks, 4 self-adhesive feet (12.7 x 1.8 mm) | 1 unit |
| J | 20442 | 368 x 100 x 255 | 6 hooks, 4 self-adhesive feet (12.7 x 1.8 mm) | 1 unit |

