

TAGS

Locking Tags are designed to help you identify your instruments, trays, and trolleys as they move from sterilisation to staging areas to procedures. Our tags allow you to indicate special handling instructions, secure trays and carts from tampering and quickly identify priority instruments for repair and sterilisation. Tags are available in a wide range of styles, colours, and locking configurations. Printed tags with special handling instructions, as well as uniquely numbered tags, are available as a standard product. Need a customised tag? We can do that for you!

Breakaway Tags are also available in a range of colours and can be written on with a permanent lab marker. They must be cut or broken to open, providing a secure lock.

Write-On Tags allow you to write specific handling instructions on each tag when more detailed communication is necessary. These tags attach to instruments and trays with ties and are larger and more visible than our other tags, ensuring that detailed instructions will be seen by all.

Metal Tray Tags easily clip onto the edge of a tray and provide ample space for identification, tracking and barcoding needs. Stainless steel for durability.

Plastic Tray Tags

Breakaway Tags

Locking Tags

One-Loop Tags

Self-Tie Tags

Identification Tags

Washer Tags

Write-On Tags

Metal Tray Tags

Please note: Unless specified, all products are not made with natural rubber latex.



Tags – Plastic Tray Tags



WHITE TAGS SHOWN ACTUAL SIZE

PLASTIC TRAY TAGS

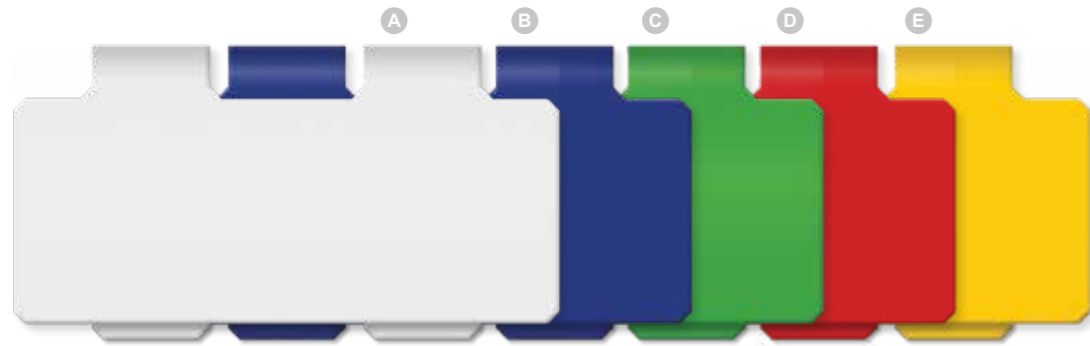
Durable, plastic tags designed for use on instrument trays. Tray tags provide a flat surface for barcode placement. Great for colour coding. Compatible with steam and gas plasma sterilisation. Tags include a built-in clip on the back.

Product code	Colour	Size	Qty
A PT-01-01	white	30 x 30mm	10 pcs
B PT-01-02	blue	30 x 30mm	10 pcs
C PT-01-03	green	30 x 30mm	10 pcs
D PT-01-04	red	30 x 30mm	10 pcs
E PT-01-05	yellow	30 x 30mm	10 pcs
F PT-01-06	purple	30 x 30mm	10 pcs
G PT-01-07	orange	30 x 30mm	10 pcs
H PT-01-09	black	30 x 30mm	10 pcs
I PT-01-14	light blue	30 x 30mm	10 pcs
J PT-02-01	white	55 x 30mm	10 pcs
K PT-02-02	blue	55 x 30mm	10 pcs
L PT-02-03	green	55 x 30mm	10 pcs
M PT-02-04	red	55 x 30mm	10 pcs
N PT-02-05	yellow	55 x 30mm	10 pcs
O PT-02-06	purple	55 x 30mm	10 pcs
P PT-02-07	orange	55 x 30mm	10 pcs
Q PT-02-09	black	55 x 30mm	10 pcs
R PT-02-14	light blue	55 x 30mm	10 pcs

K

Tags

Tags – Plastic Tray Tags



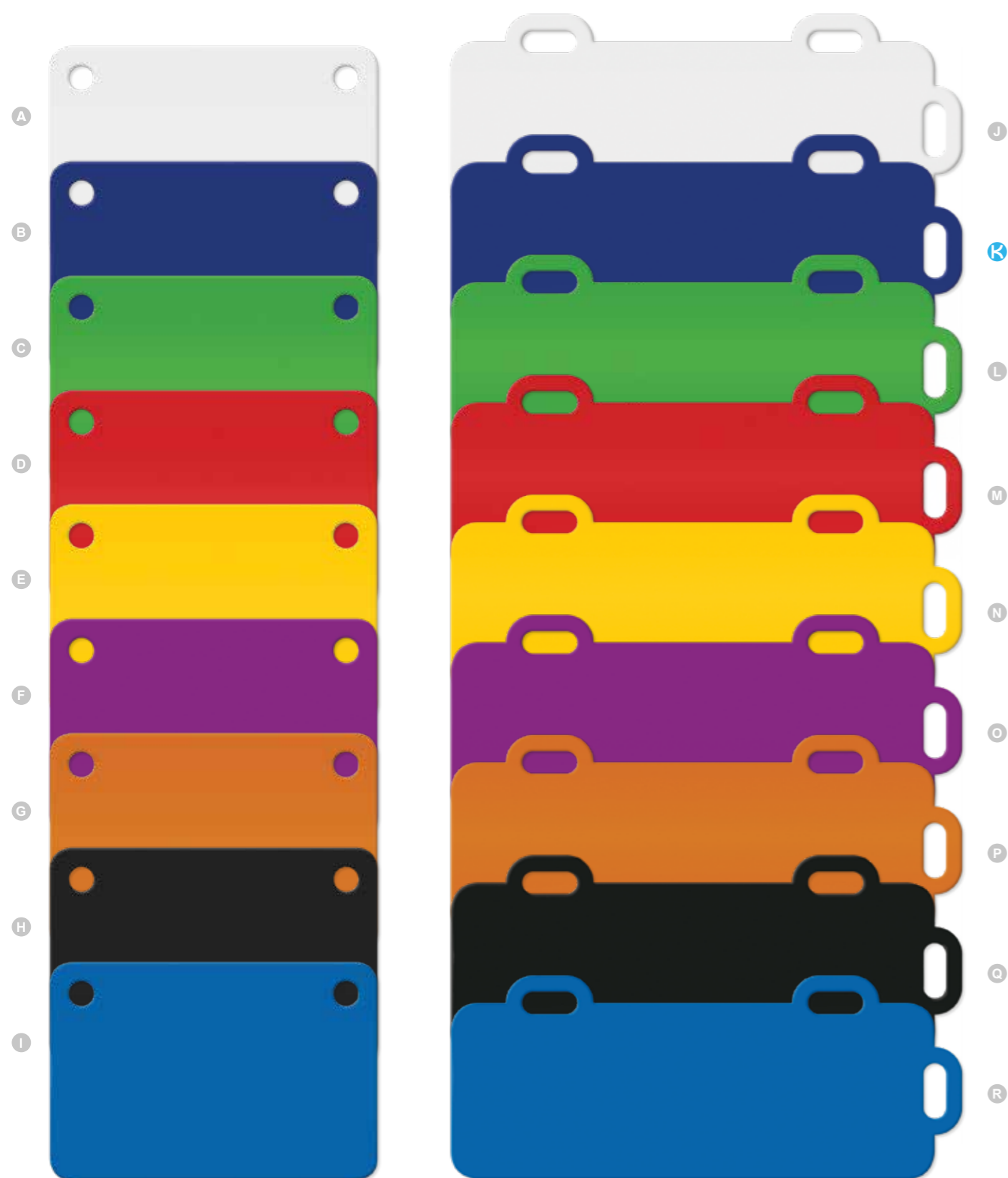
PLASTIC TRAY TAGS

Durable, plastic tags designed for use on instrument trays. Tray tags provide a flat surface for barcode placement. Great for colour coding. Compatible with steam and gas plasma sterilisation. Tags include a built-in clip on the back.

Product code	Colour	Size	Qty
A PT-04-01	white	70 x 30mm	10 pcs
B PT-04-02	blue	70 x 30mm	10 pcs
C PT-04-03	green	70 x 30mm	10 pcs
D PT-04-04	red	70 x 30mm	10 pcs
E PT-04-05	yellow	70 x 30mm	10 pcs
F PT-04-06	purple	70 x 30mm	10 pcs
G PT-04-07	orange	70 x 30mm	10 pcs
H PT-04-09	black	70 x 30mm	10 pcs
I PT-04-14	light blue	70 x 30mm	10 pcs
J PT-05-01	white	90 x 30mm	10 pcs
K PT-05-02	blue	90 x 30mm	10 pcs
L PT-05-03	green	90 x 30mm	10 pcs
M PT-05-04	red	90 x 30mm	10 pcs
N PT-05-05	yellow	90 x 30mm	10 pcs
O PT-05-06	purple	90 x 30mm	10 pcs
P PT-05-07	orange	90 x 30mm	10 pcs
Q PT-05-09	black	90 x 30mm	10 pcs
R PT-05-14	light blue	90 x 30mm	10 pcs

WHITE TAGS SHOWN ACTUAL SIZE

Tags – Plastic Tray Tags



TAGS SHOWN ACTUAL SIZE

PLASTIC TRAY TAGS

Durable, plastic tags designed for use on instrument trays. Tray tags provide a flat surface for barcode placement. Great for colour coding. Compatible with steam and gas plasma sterilisation. Tags designed to be attached to a tray using a fastener such as a ring or clip.

Product code	Colour	Size	Qty
A PT-03-01	white	60 x 40mm	10 pcs
B PT-03-02	blue	60 x 40mm	10 pcs
C PT-03-03	green	60 x 40mm	10 pcs
D PT-03-04	red	60 x 40mm	10 pcs
E PT-03-05	yellow	60 x 40mm	10 pcs
F PT-03-06	purple	60 x 40mm	10 pcs
G PT-03-07	orange	60 x 40mm	10 pcs
H PT-03-09	black	60 x 40mm	10 pcs
I PT-03-14	light blue	60 x 40mm	10 pcs
J PT-06-01	white	90 x 33mm	10 pcs
K PT-06-02	blue	90 x 33mm	10 pcs
L PT-06-03	green	90 x 33mm	10 pcs
M PT-06-04	red	90 x 33mm	10 pcs
N PT-06-05	yellow	90 x 33mm	10 pcs
O PT-06-06	purple	90 x 33mm	10 pcs
P PT-06-07	orange	90 x 33mm	10 pcs
Q PT-06-09	black	90 x 33mm	10 pcs
R PT-06-14	light blue	90 x 33mm	10 pcs

TRAY TAG RING AND CLIP

Durable, stainless steel ring and clip are designed to be used with Plastic Tray Tags to attach the tag to the tray. The clip specifically fits Plastic Tray Tags PT-06-01 through to PT-06-14.

Product code	Description	Qty
S TG-100	ring, 20mm diameter	100 pcs
T TG-200	clip	100 pcs





PLASTIC TRAY TAGS

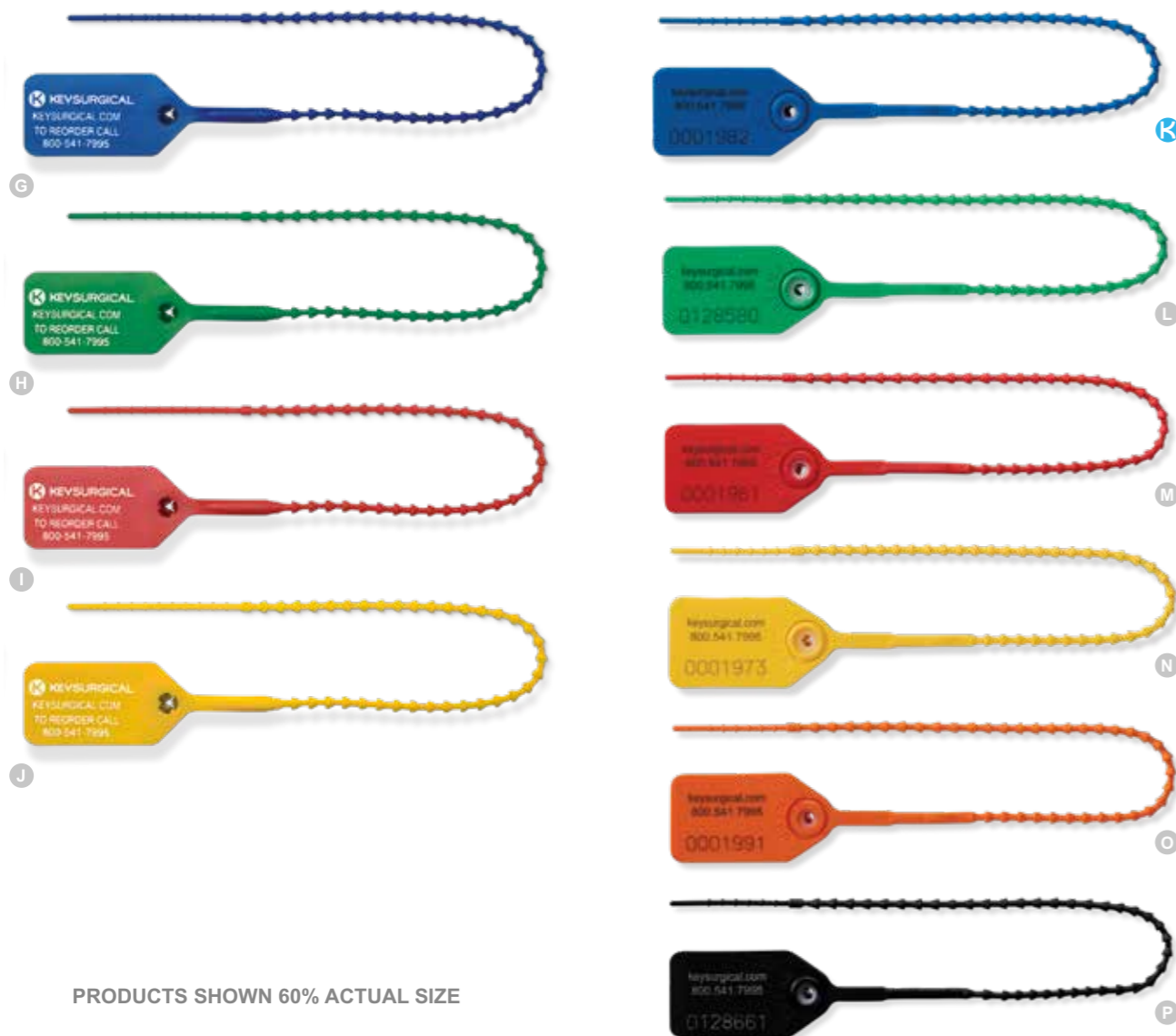
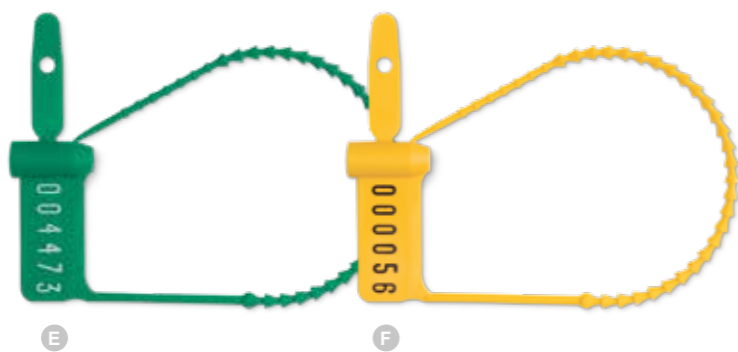
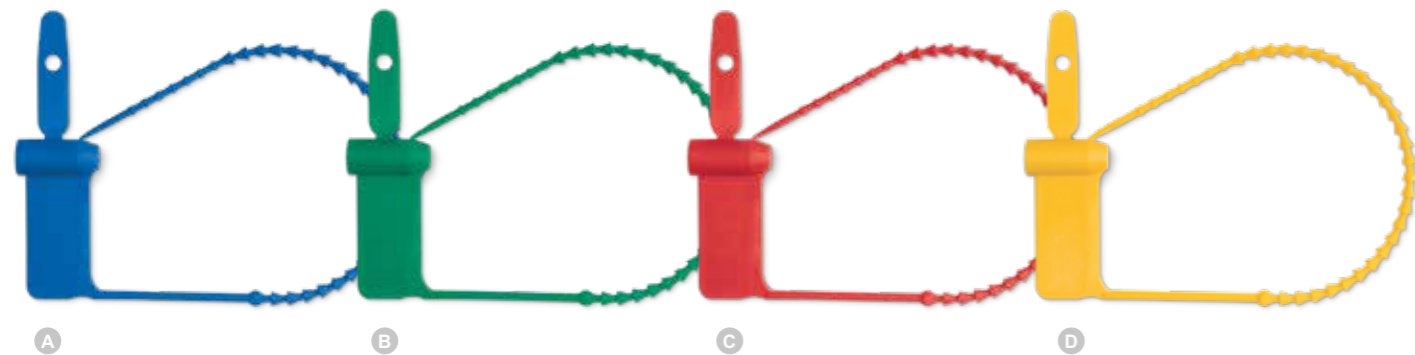
Tray tags simplify the identification of sets or instruments and provide a useful means of labelling items for tracking and tracing. All tags are produced to withstand the rigours of the decontamination cycle. Available in 18 colours and also in stainless steel. Tray tags can be attached to trays using either a split ring or a cable tie.

Product code	Colour	Size	Qty
A TAG020	black	90 x 38mm	100 pcs
B TAG018	grey	90 x 38mm	100 pcs
C TAG027	sky blue	90 x 38mm	100 pcs
D TAG026	royal blue	90 x 38mm	100 pcs
E TAG023	turquoise	90 x 38mm	100 pcs
F TAG017	green	90 x 38mm	100 pcs
G TAG021	lime	90 x 38mm	100 pcs
H TAG013	yellow	90 x 38mm	100 pcs
I TAG014	orange	90 x 38mm	100 pcs
J TAG015	red	90 x 38mm	100 pcs
K TAG012	tan	90 x 38mm	100 pcs
L TAG011	white	90 x 38mm	100 pcs
TAG016	blue	90 x 38mm	100 pcs
TAG019	purple	90 x 38mm	100 pcs
TAG022	pink	90 x 38mm	100 pcs
TAG024	mustard	90 x 38mm	100 pcs
TAG025	terracotta	90 x 38mm	100 pcs
TAG55WH	white	90 x 55mm	100 pcs



WHITE TAG SHOWN ACTUAL SIZE

Tags – Breakaway Tags

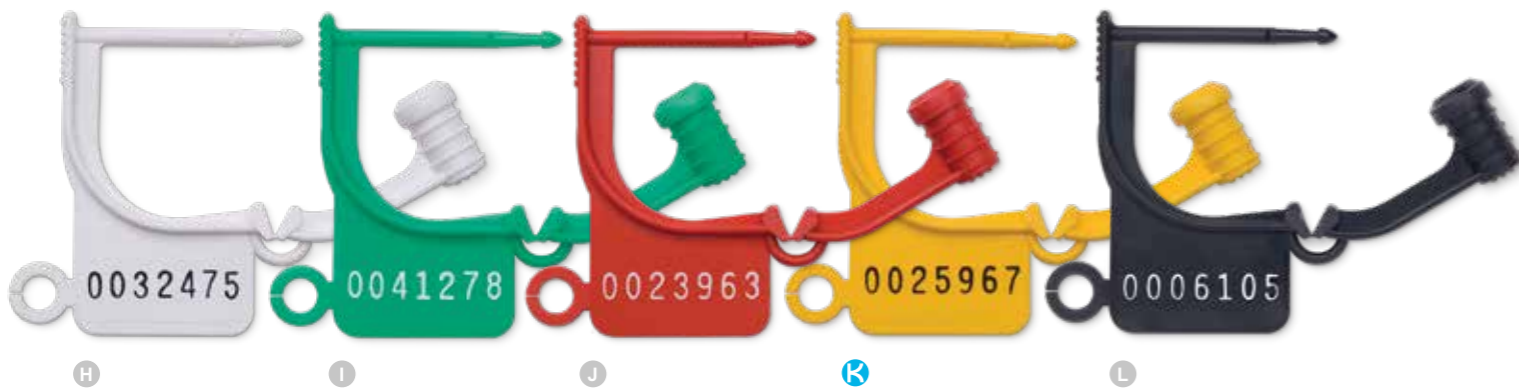
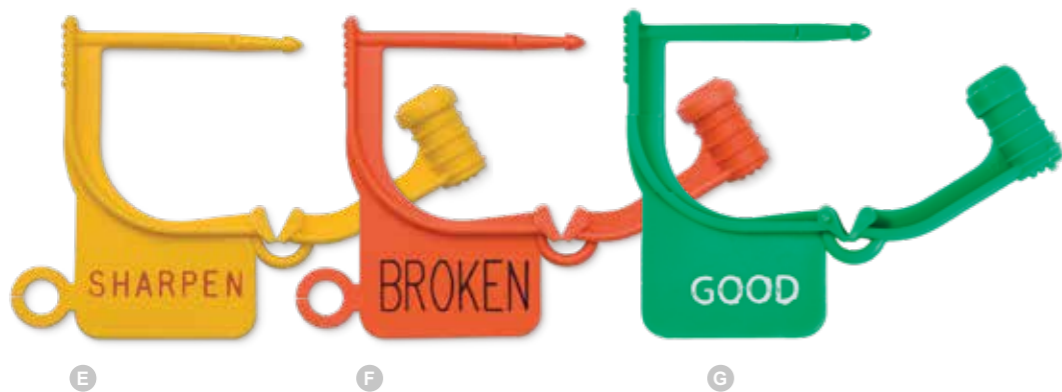


PRODUCTS SHOWN 60% ACTUAL SIZE

BREAKAWAY TAGS

Versatile, durable, and economical. Tamper-resistant. Tags cinch closed until tight and must be cut or broken to open, providing a secure lock. Select styles are compatible with steam and gas plasma sterilisation. Single use.

	Product code	Description	Colour	Size	Qty
A	LR-102	sterilisable	blue	89mm	100 pcs
B	LR-103	sterilisable	green	89mm	100 pcs
C	LR-104	sterilisable	red	89mm	100 pcs
D	LR-105	sterilisable	yellow	89mm	100 pcs
E	LR-103N	sterilisable, uniquely numbered	green	89mm	100 pcs
F	LR-105N	sterilisable, uniquely numbered	yellow	89mm	100 pcs
G	LR-312	sterilisable	blue	139.7mm	100 pcs
H	LR-313	sterilisable	green	139.7mm	100 pcs
I	LR-314	sterilisable	red	139.7mm	100 pcs
J	LR-315	sterilisable	yellow	139.7mm	100 pcs
K	LR-322	non-sterilisable, uniquely numbered	blue	152.4mm	100 pcs
L	LR-323	non-sterilisable, uniquely numbered	green	152.4mm	100 pcs
M	LR-324	non-sterilisable, uniquely numbered	red	152.4mm	100 pcs
N	LR-325	non-sterilisable, uniquely numbered	yellow	152.4mm	100 pcs
O	LR-327	non-sterilisable, uniquely numbered	orange	152.4mm	100 pcs
P	LR-329	non-sterilisable, uniquely numbered	black	152.4mm	100 pcs



PRODUCTS SHOWN ACTUAL SIZE

LOCKING TAGS

Versatile, durable, and economical. Tamper-resistant. Compatible with steam and gas plasma sterilisation. Customisable. 25.4mm length. Single use. Quantities available in 100 pcs and 1000 pcs.

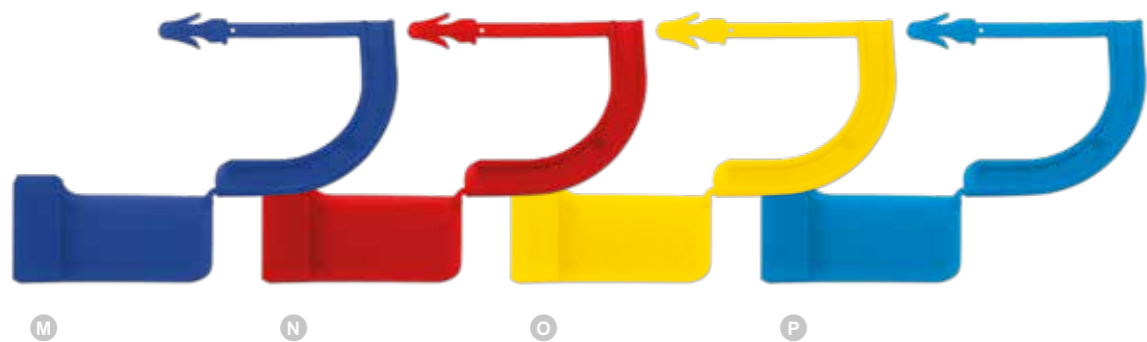
Product code	Description	Colour	Qty
A LT-150	clean	white	100 pcs
B LT-210	quick turnover	blue	100 pcs
C LT-310	loaner	green	100 pcs
D LT-450	repair	red	100 pcs
E LT-550	sharpen	yellow	100 pcs
F LT-720	broken	orange	100 pcs
G LOCK994G	good	green	100 pcs
H LT-100N	uniquely numbered	white	100 pcs
I LT-300N	uniquely numbered	green	100 pcs
J LT-400N	uniquely numbered	red	100 pcs
K LT-500N	uniquely numbered	yellow	100 pcs
L LT-900N	uniquely numbered	black	100 pcs

SNAPLOCK LOCKING TAGS

Our range of non-repetitive numbered locks for full product tracking and traceability. Compatible with steam sterilisation systems. Single use.

Product code	Description	Colour	Qty
SNAPLOCKG001	uniquely numbered	green	100 pcs
M SNAPLOCKG002	no numbers	green	100 pcs
SNAPLOCKR002	uniquely numbered	red	100 pcs
SNAPLOCKY003	uniquely numbered	yellow	100 pcs





PRODUCTS SHOWN ACTUAL SIZE

LOCKING TAGS

Versatile, durable, and economical. Tamper-resistant. Compatible with steam and gas plasma sterilisation. Customisable. 25.4mm length. Single use. Quantities available in 100 pcs and 1000 pcs.

Product code	Colour	Qty
A LT-100	white	100 pcs
B LT-110	pink	100 pcs
C LT-112	gold	100 pcs
D LT-116	purple	100 pcs
E LT-200	blue	100 pcs
F LT-300	green	100 pcs
G LT-400	red	100 pcs
H LT-500	yellow	100 pcs
I LT-600	grey	100 pcs
J LT-700	orange	100 pcs
K LT-800	brown	100 pcs
L LT-900	black	100 pcs

LOCKING TAGS

Plastic seals for Aesculap containers. Heat resistant up to 134°C. Single use.

Product code	Colour	Qty
M 01020	blue	1000 pcs
N 01023	red	1000 pcs
O 01024	yellow	1000 pcs
P 02623	light blue	1000 pcs
Q 01241	green	1000 pcs
R 01243	red	1000 pcs
S 01254	yellow	1000 pcs





CASE LOCKING TAGS

A versatile, durable, and economical option for identifying and securing cases and containers. Tamper-resistant. Compatible with steam and gas plasma sterilisation. 22mm operational length. Smallest size slot tag will fit is 1.6mm x 10mm. Single use. Quantities available in 100 pcs and 1000 pcs.

	Product code	Colour	Qty
A	LT-001	white	100 pcs
B	LT-002	blue	100 pcs
C	LT-003	green	100 pcs
D	LT-004	red	100 pcs
E	LT-007	orange	100 pcs



INDICATOR DOT LOCKING TAGS

Indicator dots on tags change colour to indicate exposure to steam sterilisation (blue dot to dark). Versatile, durable, and economical. Tamper-resistant. Compatible with steam sterilisation. 25.4mm length. Single use. Quantities available in 100 pcs and 1000 pcs.

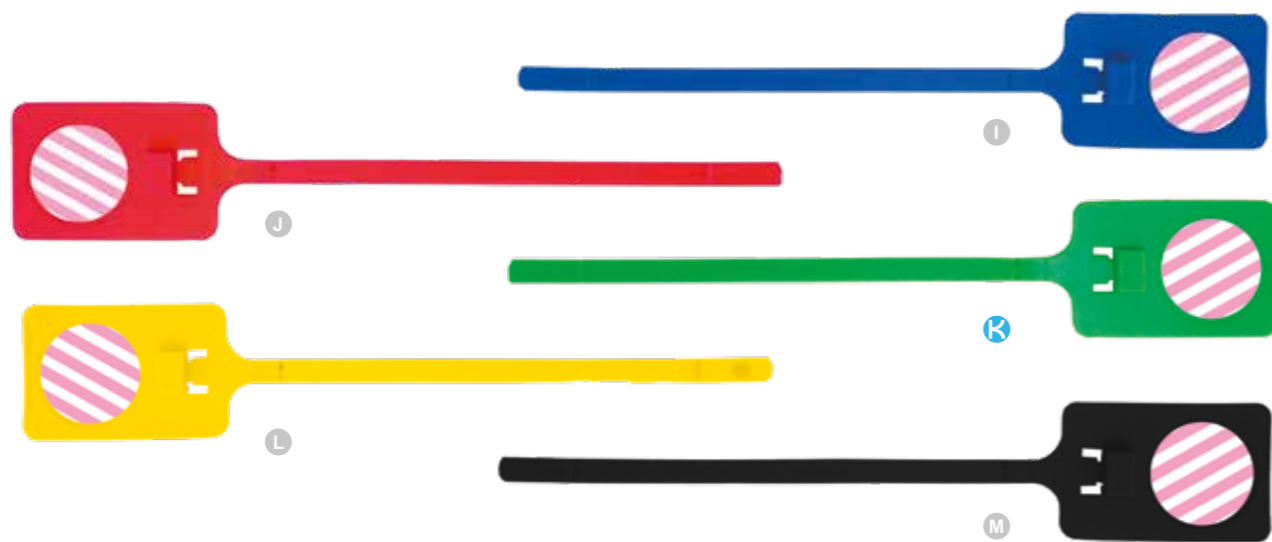
	Product code	Colour	Qty
F	LS-007	orange	100 pcs
G	LS-100	white	100 pcs
H	LS-400	red	100 pcs

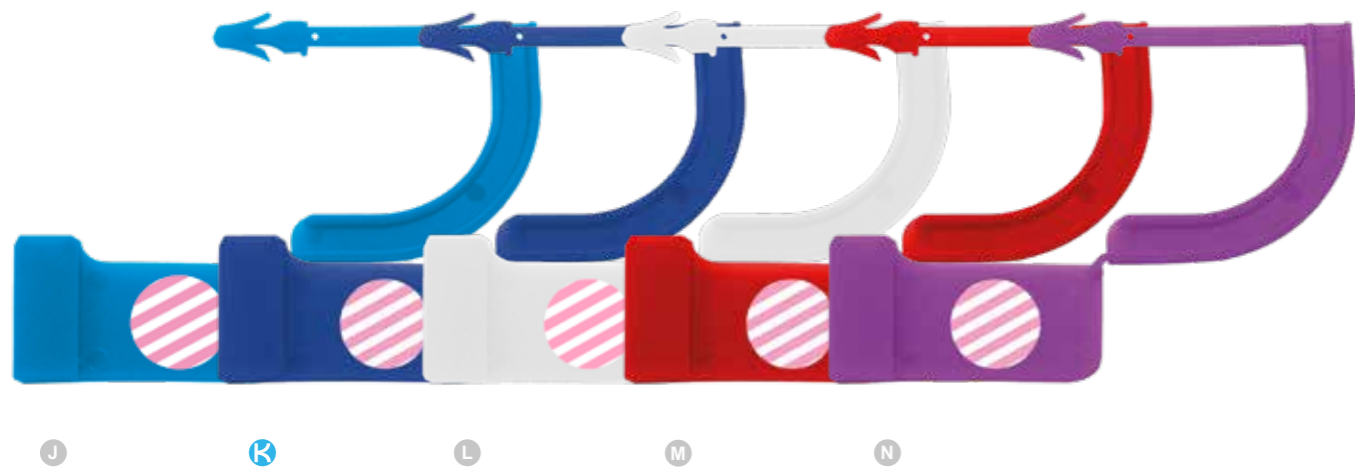
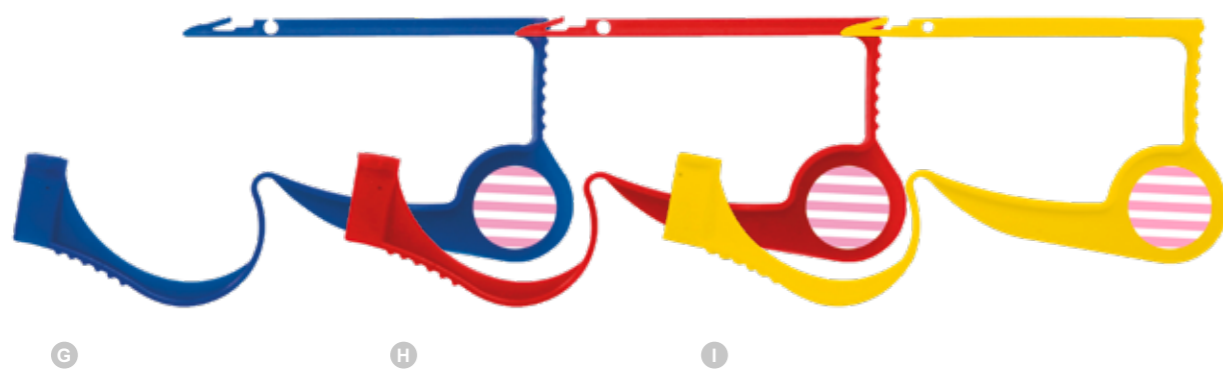
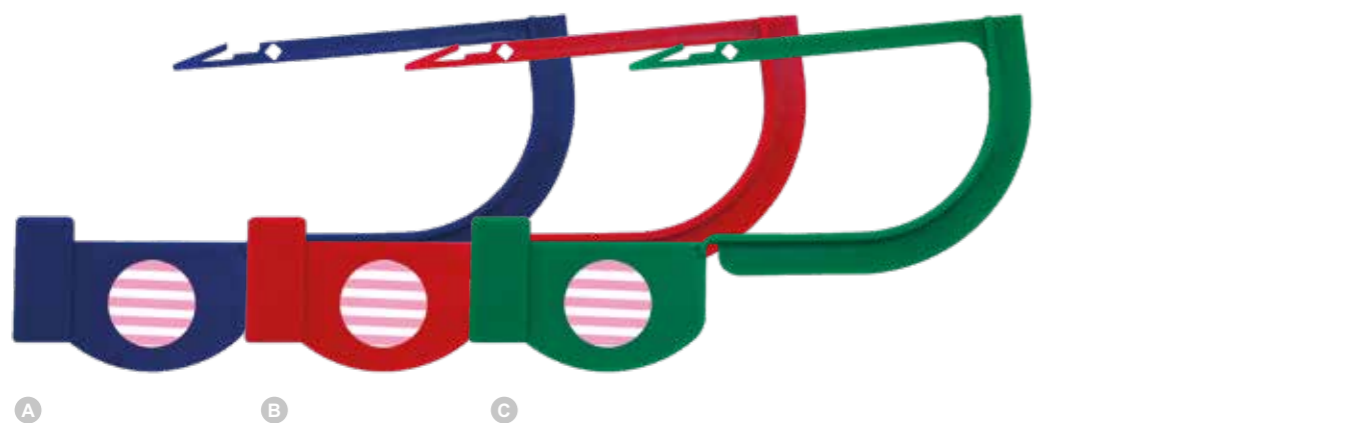


INDICATOR DOT LOCKING TAGS

Rectangular bars with universal seals. Compatible with steam sterilisation. Single use.

	Product code	Colour	Qty
I	01013	blue	1000 pcs
J	01212	red	1000 pcs
K	01213	green	1000 pcs
L	01214	yellow	1000 pcs
M	01215	black	1000 pcs





INDICATOR DOT LOCKING TAGS

Suitable for Aesculap and Wagner containers amongst others. Rectangular bar with '2011' universal seals. Compatible with steam sterilisation. Single use.

Product code	Colour	Qty
A 01220	dark blue	1000 pcs
B 01221	red	1000 pcs
C 01233	green	1000 pcs
D 01238	yellow	1000 pcs
E 01239	white	1000 pcs
F 02640	orange	1000 pcs
G 02507	blue	1000 pcs
H 02510	red	1000 pcs
I 02511	yellow	1000 pcs

INDICATOR DOT LOCKING TAGS

For Aesculap containers. Rectangular bar with seals. Compatible with steam sterilisation. Single use.

Product code	Colour	Qty
J 02670	light blue	1000 pcs
K 01228	blue	1000 pcs
L 01230	white	1000 pcs
M 01231	red	1000 pcs
N 01237	violet	1000 pcs





INDICATOR DOT LOCKING TAGS

For Aesculap and Wagner containers. Compatible with steam sterilisation. *For Martin containers. Single use.

Product code	Colour	Qty
A 02632	red	1000 pcs
B 02633	blue	1000 pcs
C 02637*	red	500 pcs



INDICATOR DOT LOCKING TAGS

Rectangular bar with 1-2-3 universal seals. Compatible with steam sterilisation. Single use.

Product code	Colour	Qty
D 02601	natural colour	1000 pcs
E 02603	white	1000 pcs
F 02605	yellow	1000 pcs
G 02607	red	1000 pcs
H 02609	blue	1000 pcs
I 02611	green	1000 pcs



INDICATOR DOT LOCKING TAGS

For Aesculap and Wagner containers. Compatible with steam sterilisation. Single use.

Product code	Colour	Qty
J 01245	blue	1000 pcs
K 01246	green	1000 pcs
L 01247	white	1000 pcs
M 01248	red	1000 pcs
N 01249	yellow	1000 pcs



INDICATOR DOT LOCKING TAGS

Rectangular XL bar with universal seal. Compatible with steam sterilisation. Single use.

Product code	Colour	Qty
O 02516	violet	1000 pcs

Tags – One-Loop Tags

ONE-LOOP TAGS

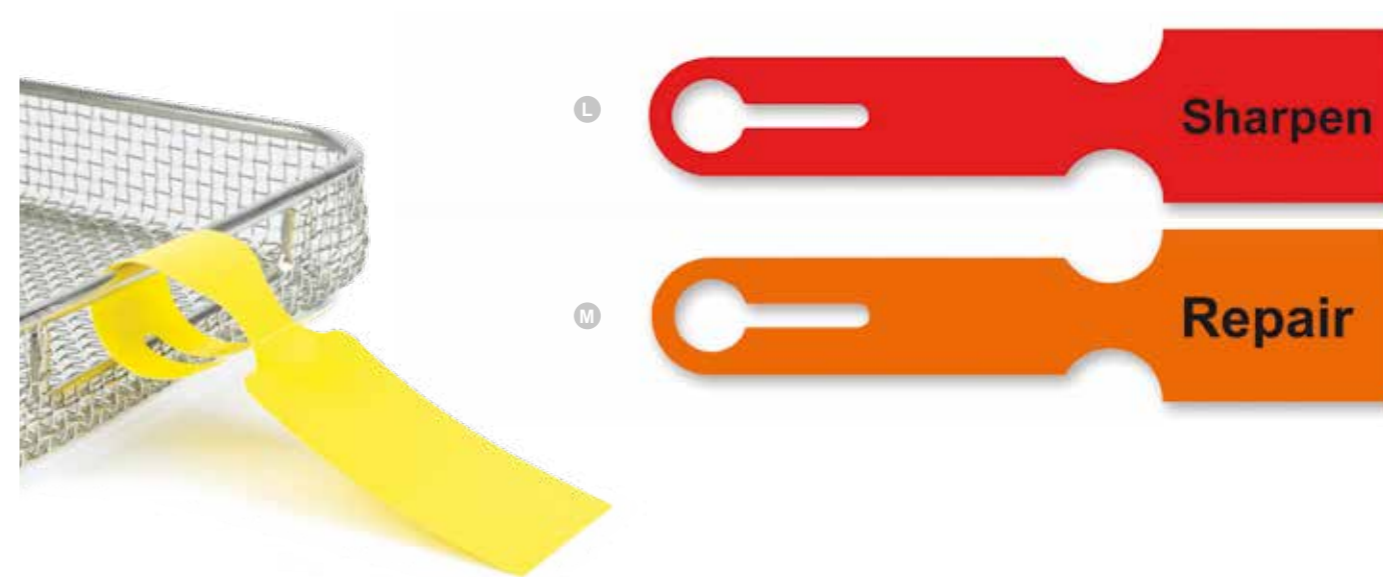
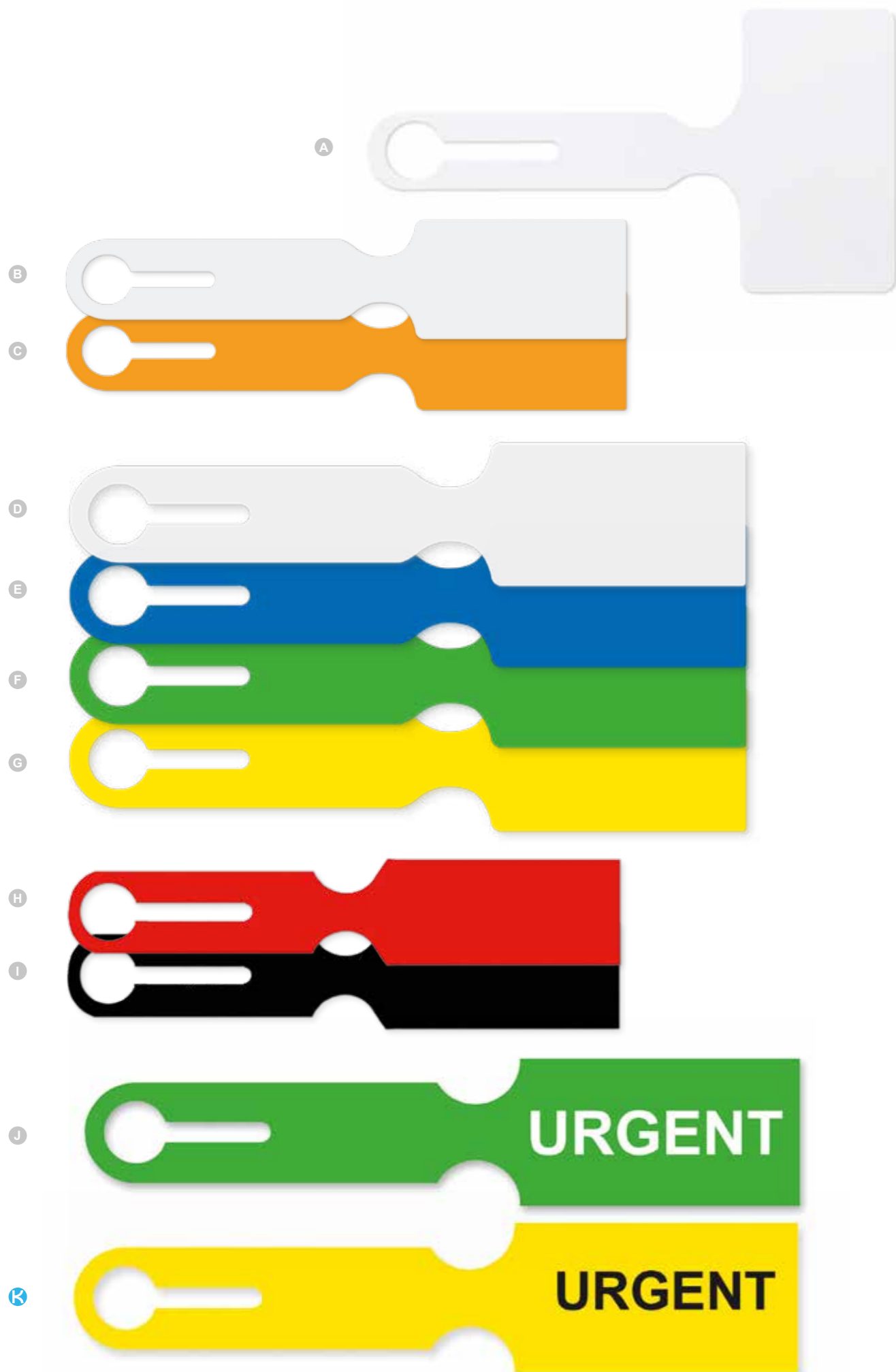
Designed to loop around tray handles to identify through colour-coding or providing a flat surface for barcode placement. Compatible with steam and EtO sterilisation. Single use.

Product code	Colour	Size	Qty
A PL-101	white	206 x 110mm	250 pcs
B PL-201	white	236 x 50mm	250 pcs
C PL-207	orange	236 x 50mm	250 pcs

ONE-LOOP TAGS - MESH BASKETS

Heat resistant up to 134°C. Suitable for washer-disinfectors. Single use.

Product code	Colour	Size	Qty
D 09244	white	236 x 50mm	250 pcs
E 09264	blue	236 x 50mm	250 pcs
F 09265	green	236 x 50mm	250 pcs
G 09267	yellow	236 x 50mm	250 pcs
H 09637	red	160 x 35mm	250 pcs
I 09677	black	160 x 35mm	250 pcs
09399	white	254 x 42mm	600 pcs
J 09570	green, urgent	240 x 50mm	250 pcs
K 09584	yellow, urgent	240 x 50mm	250 pcs
L 09752	red, sharpen	150 x 35mm	250 pcs
M 09753	orange, repair	150 x 35mm	250 pcs



Tags – Self-Tie Tags

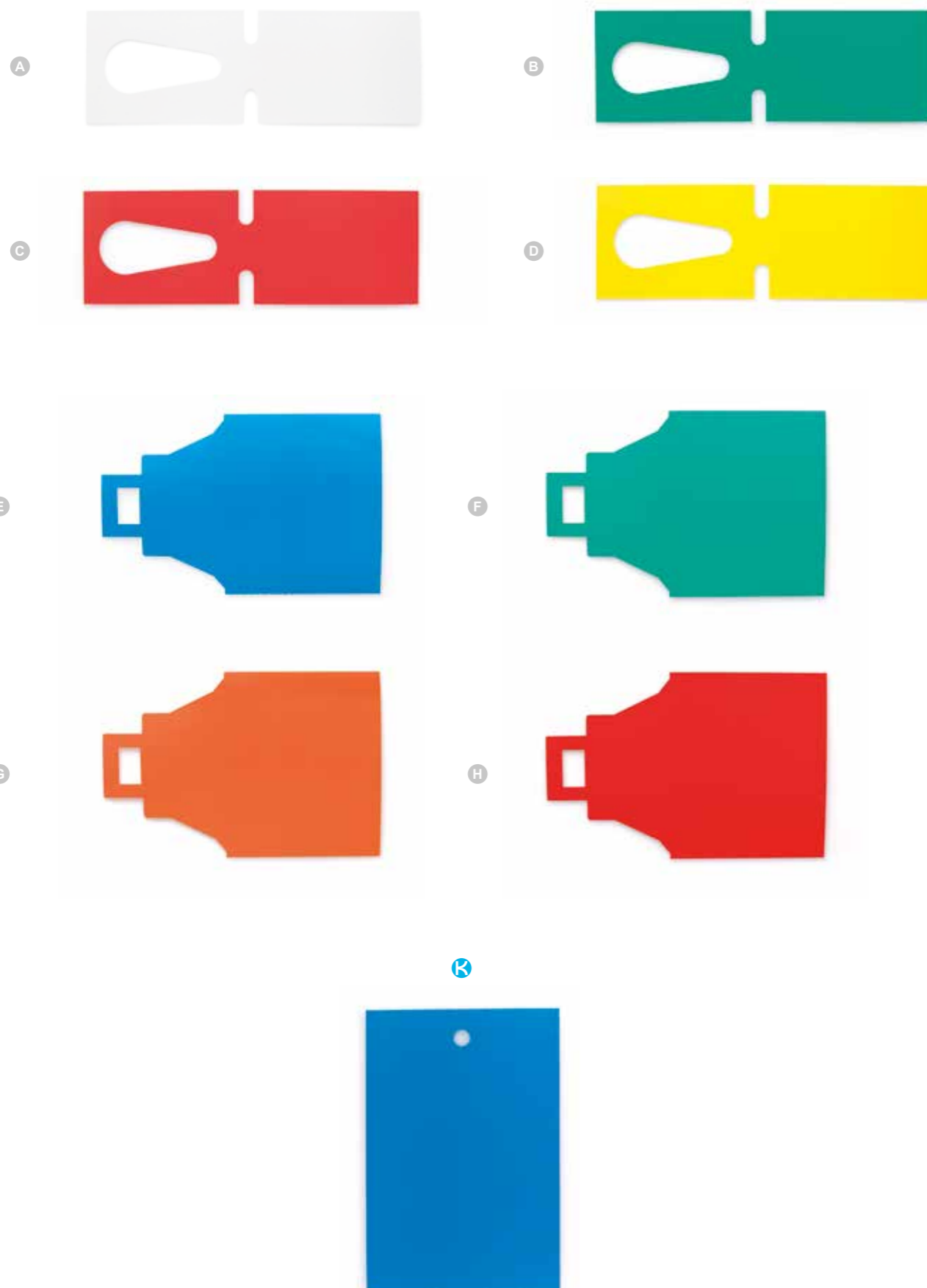


SELF-TIE TAGS

Self-Tie Tags are designed for the identification of trays that are to be steam sterilised. Plain tag with dumbbell self-tie. Single use.

	Product code	Thickness	Colour	Size	Qty
A	SELFTIE01	195 mic	white	25 x 190.5mm	1000 per roll
B	SELFTIE01-GRN	195 mic	green	25 x 190.5mm	1000 per roll
C	SELFTIE01-YEL	195 mic	yellow	25 x 190.5mm	1000 per roll
D	SELFTIE01-RED	195 mic	red	25 x 190.5mm	1000 per roll
E	SELFTIE01-BLU	195 mic	blue	25 x 190.5mm	1000 per roll
F	SELFTIE01-ORA	195 mic	orange	25 x 190.5mm	1000 per roll





IDENTIFICATION CONTAINER CARRIER TAGS

Identification tags comply with different tracking and tracing systems and sterilisation methods. Plain tag with dumbbell self-tie.

IDENTIFICATION TAGS

Product code	Description	Colour	Size	Qty
A	TAG-CONTAIN1	white	75 x 228.6mm	250 per roll
B	TAG-CONTAIN1-GRE	green	75 x 228.6mm	250 per roll
C	TAG-CONTAIN1-RED	red	75 x 228.6mm	250 per roll
D	TAG-CONTAIN1-YEL	yellow	75 x 228.6mm	250 per roll
	TAG-CONTAIN2	white	96 x 280mm	250 per roll

IDENTIFICATION SECURITY TAGS

Product code	Description	Colour	Size	Qty
	TAG-SECURE1	white	152 x 101.6mm	500 per roll
E	TAG-SECURE1-BLU	blue	152 x 101.6mm	500 per roll
F	TAG-SECURE1-GRE	green	152 x 101.6mm	500 per roll
G	TAG-SECURE1-ORA	orange	152 x 101.6mm	500 per roll
H	TAG-SECURE1-RED	red	152 x 101.6mm	500 per roll
	TAG-SECURE1-YEL	yellow	152 x 101.6mm	500 per roll

IDENTIFICATION AUTOCLAVE TAGS

Product code	Description	Colour	Size	Qty
	TAG-TRAY1	white	70 x 101.6mm	500 per roll
K	TAG-TRAY1-BLU	blue	70 x 101.6mm	500 per roll



Tags – Washer Tags

WASHER TAGS

Washer tags can be fixed onto the handles of wash baskets to share information with the clean room.

Product code	Description	Colour	Size	Qty
TAG-WASH	self-tie, t-shape, polyplas 250 mic	white	50 x 228.6mm	500 per roll
A TAG-WASH-BLU	self-tie, t-shape, polyplas 250 mic	blue	50 x 228.6mm	500 per roll
B TAG-WASH-GRN	self-tie, t-shape, polyplas 250 mic	green	50 x 228.6mm	500 per roll
C TAG-WASH-PNK	self-tie, t-shape, polyplas 250 mic	pink	50 x 228.6mm	500 per roll
D TAG-WASH-RED	self-tie, t-shape, polyplas 250 mic	red	50 x 228.6mm	500 per roll
E TAG-WASH-ORA	self-tie, t-shape, polyplas 250 mic	orange	50 x 228.6mm	500 per roll
F TAG-WASH-YEL	self-tie, t-shape, polyplas 250 mic	yellow	50 x 228.6mm	500 per roll





WRITE-ON TAGS

Durable and economical. Identify and record specific instructions with these versatile tags. Tamper-resistant. Compatible with steam and gas plasma sterilisation. Customisable. Single use.

Product code	Description	Colour	Qty
A WT-0009	blank tag	black	100 pcs
B WT-0203	loaner	green	100 pcs
C WT-0304	priority	red	100 pcs
D WT-0405	re-run	yellow	100 pcs
E WT-0507	broken, do not use	orange	100 pcs
F WT-1911	missing	pink	100 pcs
G WT-2614	loaner	light green	100 pcs

MARKER PENS

Ink is waterproof, alcohol resistant, and compatible with steam and gas plasma sterilisation.

Product code	Description	Colour	Qty
PEN001	marker pen	black	10 pcs
PEN002	marker pen	red	10 pcs
PEN003	marker pen	blue	10 pcs
I 05514	marker Steriliner	black	10 pcs
J RT-100P	permanent marker	black	10 pcs
RT-209P	permanent marker	black	12 pcs
K 09170	permanent marker	red	10 pcs
L 09088	permanent marker	black	10 pcs
M 05505	permanent marker	black	1 pc



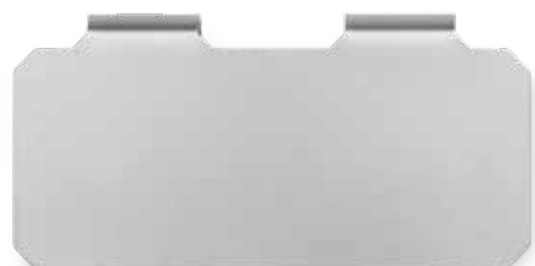
Tags – Metal Tray Tags



A



B



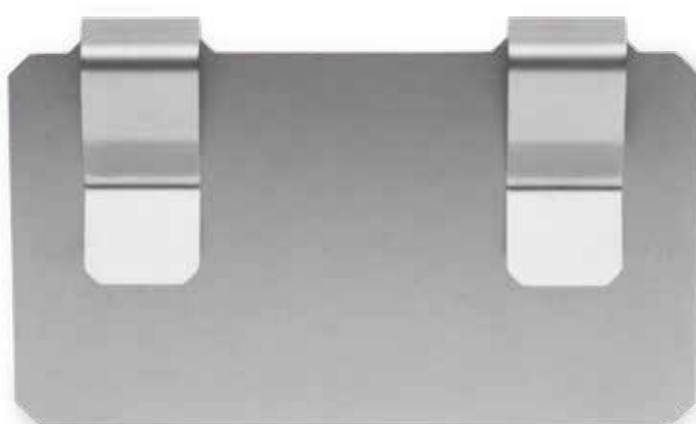
C



D



FRONT



BACK

E

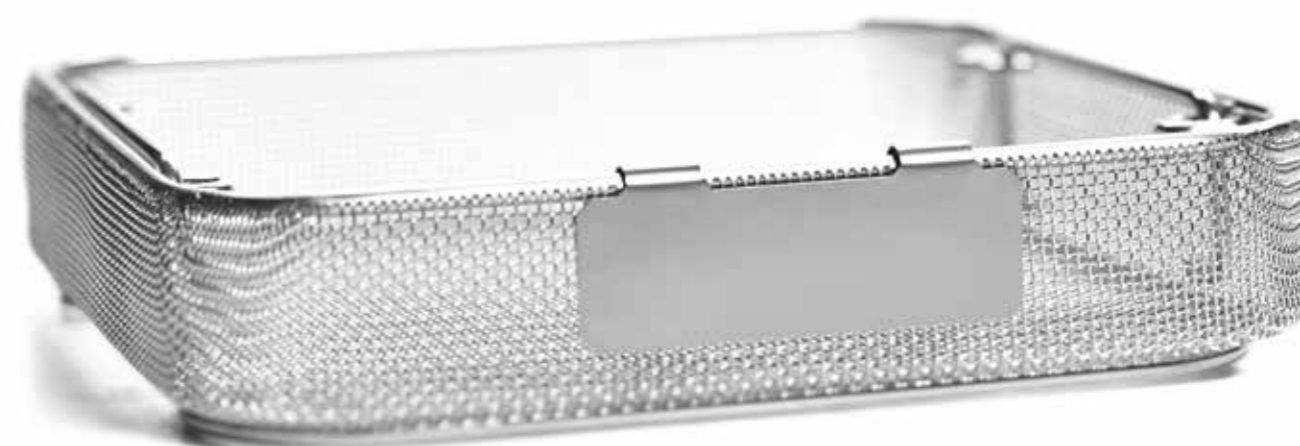
METAL TRAY TAGS

Stainless steel tags easily clip onto the side of a tray or container. Flat surface allows for placement of barcode, label, or other identifying instructions. Available in five sizes. Compatible with steam sterilisation. Quantities available in 1 pc and 10 pcs.

Product code	Size	Qty
A MT-0303	30 x 30mm	1 pc
B MT-0553	55 x 30mm	1 pc
C MT-0703	70 x 30mm	1 pc
D MT-0903	90 x 30mm	1 pc
E MT-0905	90 x 50mm	1 pc

STAINLESS STEEL TRAY TAG

Product code	Size	Qty
TAGMET7530	75 x 30mm	1 pc



PRODUCT SHOWN ACTUAL SIZE