

# 2% Chlorhexidine Gluconate Antiseptic Wipes



**pH Balanced**  
For healthier skin



**Made From Fluff Pulp**  
Soft & gentle to your skin



**Contain No Alcohol**  
Suitable for frequent use



**Dermatologically Tested**  
Safe & suitable for all skin types



**Aloe Vera & Vitamin E Extracts**  
Keep skin moisturized & hydrated



**neu DOLPHIN**



**neuDolphin 2% Chlorhexidine Gluconate (CHG) Antiseptic Wipes** are made from textured fluff pulp material, making them soft and gentle on the skin. Dermatologically tested, these rinse-free, alcohol-free wipes offer moisturizing properties and are safe for all skin types. They provide rapid anti-microbial action, reducing microbe transmission and maintaining residual activity for up to 6 hours. Tested to kill 99.9% of bacteria, they are ideal for pre- and post-surgical care, ensuring comprehensive skin hygiene.



**Ingredients**

Aqua, Chlorhexidine Digluconate, Propylene Glycol, Phenoxyethanol, Cetylpyridinium Chloride, Aloe Barbadensis Leaf Extract

**Instructions for Use**

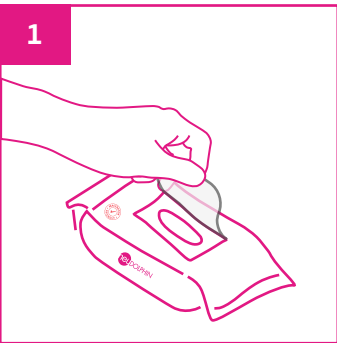
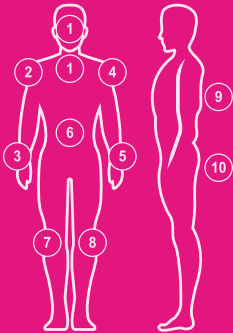
Do not apply if allergies to one of the ingredients are known or suspected. Do not mix with other soaps, ointments, enzymes, etc. To be used only for a limited period of time. For long term use, cleaning in between (e.g. weekly) should be performed with wash lotion and water.

It is not necessary to rinse with water after cleaning. The anti-microbial residual action last up to 6 hours. It is normal to feel a sticky sensation on your body which will last for a few minutes as the effect of Chlorhexidine binds to your skin.

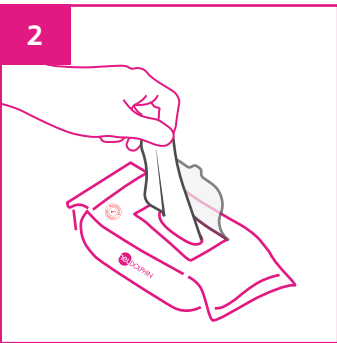
**Usage Guide**

Wipe all areas of your body to ensure maximum protection. Do not rinse after wiping, allow area to air dry. Discard each wipe after single use. **Avoid the ears, eyes, mouth, and genital areas.**

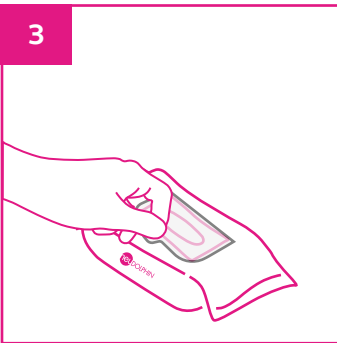
- ① Face, neck and chest.
- ② Right Shoulder, Arm, and Armpit
- ③ Right Hand and Wrist
- ④ Left Shoulder, Arm, and Armpit
- ⑤ Left Hand and Wrist
- ⑥ Abdomen
- ⑦ Right Leg and Foot
- ⑧ Left Leg and Foot
- ⑨ Back
- ⑩ Buttocks



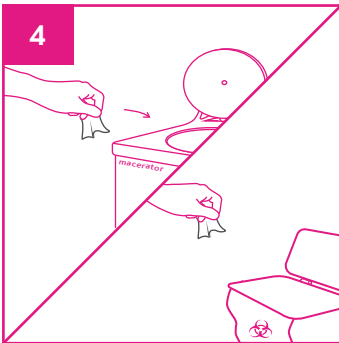
1 Peel adhesive seal partially.



2 Gently pull wipes as required.



3 Close adhesive seal to keep wipe



4 Dispose used wipes in macerator or appropriate waste bin. Do not flush wipes down the toilet.

PRODUCT DESCRIPTION	ITEM CODE	WIPE SIZE	PACKING
neuDolphin 2% Chlorhexidine Gluconate Antiseptic Wipes	NDC1110	200 x 260 mm	10 wipes / pack
CARTON DIMENSIONS	CARTON PACKING	CARTON WEIGHT	SHELF LIFE
440 x 238 x 210 mm	48 packs / carton	9.0 kg	3 years

