

Adult Body Wipes



pH Balanced
For healthier skin



Made From Fluff Pulp
Soft & gentle to your skin



Contain No Alcohol
Suitable for frequent use



Dermatologically Tested
Safe & suitable for all skin types



Aloe Vera & Vitamin E Extracts
Keep skin moisturized & hydrated



ADULT BODY WIPES

Anti-bacterial, soft & gentle to your skin

neuDOLPHIN

Hygienic • Fragrance Free • Moisturising

www.neuDolphin.com

www.neuDolphin.com

Dermatologically Tested

neuDOLPHIN

KILLS
99.99%
BACTERIA

neuDOLPHIN

neuDolphin adult body wipes are made from texture-like fluff pulp that is gentle and soft to your skin. It is dermatologically tested to be safe for use with all skin types with anti-bacterial properties that, kills 99.99% of bacteria with every wipes. Easy for sponging or cleaning larger surface area. It is alcohol free and suitable for frequent uses.



The wipes are ideal to be use for hospitals, nursing homes, childcare centres, schools and other institutions.

Gentle enough for everyday use, the large wipes are alcohol free, fragrance free and contains aloe vera and vitamin E extracts to keep your skin moisturized and soft.

It can be disposed into suitable waste bin or directly into the macerator along with other medical pulps, preventing the risk of cross contamination and infection.

Benefits of the neuDolphin Wipes

- ✓ Alcohol free
- ✓ pH balanced
- ✓ Fragrance free
- ✓ Macerator Friendly
- ✓ Dermatologically Tested
- ✓ Handy pack for easy to use
- ✓ Biodegradable and Eco-friendly
- ✓ Effective against virus and bacteria
- ✓ Hygienic, gentle and soft to your skin
- ✓ Kills 99.99% germs within 60 seconds

Suitable for use:



Personal hygiene



Baby care



Hospitals



Nursing homes

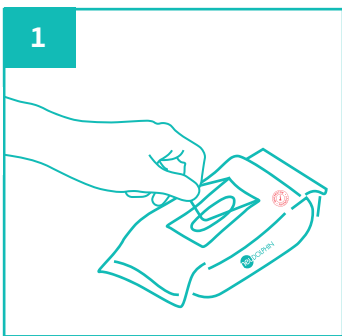


Childcare centres



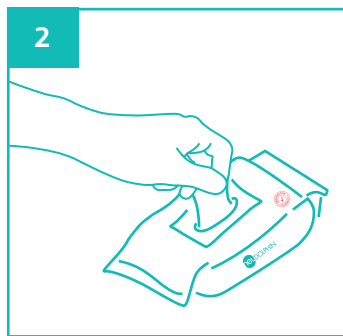
Schools

Easy to use:



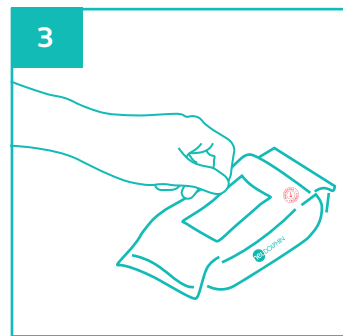
1

Peel adhesive seal partially



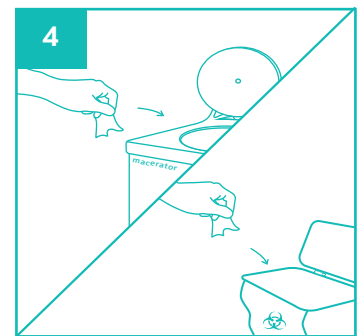
2

Gently pull wipes as required



3

Close adhesive seal to keep wipe moist



4

Dispose used wipes in macerator or appropriate waste bin

PRODUCT DESCRIPTION	WIPE SIZE	PACKAGING	CARTON DIMENSION	ORDER CODE
neuDolphin Adult Body Wipes Shelf life: 3 years	200 x 260mm	20 wipes per pack (40 packs per carton)	456 x 236 x 300 mm	NDW1020



Manufactured in accordance with PAS29:1999
Disposable Pulp Products For Use in Healthcare

Rev0(0722)EN